

The Homestead at Coon Rapids

A Senior Living and Care Community



MEMORY SUPPORT



**NATIONAL
SERVICES**

THE HOMESTEAD AT COON RAPIDS

Memory Support

The Homestead at Coon Rapids' specialized memory support program provides a nurturing environment where individuals with memory loss move throughout their days enjoying the freedom to be active and social, while receiving structured care and supervision in a welcoming, appealing place to call home.

Our compassionate, caring staff strive to create a thriving environment by celebrating individuality, supporting choice and encouraging independence whenever possible. Family and friends are always welcome to spend time with their loved one and join us for meals, special events and celebrations.

Special Features

- Comfortable residences with managed access
- Thoughtfully designed bathrooms with grab bars
- Specially trained staff available 24 hours/day
- Registered nurse available on-site 40 hours/week and on-call 24 hours/day
- On-site physician services, lab and X-ray

Added Conveniences

(Included in monthly rate)

- Three nutritious home-cooked meals offered daily
- Complimentary snack, tea, coffee and juice bar
- Weekly light housekeeping services
- Emergency call system with portable pendant
- All utilities including basic cable (phone and expanded cable additional)
- Complimentary Wi-Fi
- Planned life enrichment activities designed to meet the physical, social, emotional, intellectual, spiritual and occupational needs of our residents
- Use of all community spaces
- Scheduled transportation for outings
- Apartment and building maintenance
- Professional management by Volunteers of America
- Month-to-month residency agreement

THE HOMESTEAD AT COON RAPIDS

Memory Support Philosophy Statement

Our philosophy of service and care embodies the very essence of dignity, quality of life and respect for the individual. The Homestead at Coon Rapids' Memory Support program is designed specifically to caring for people with Alzheimer's disease or other memory impairments. A tranquil, nurturing environment has been created to encourage independence and support choice.

Planned service coordination enables residents to receive the personal care they may need, together with equally important social interaction.

Commitment to Care and Service

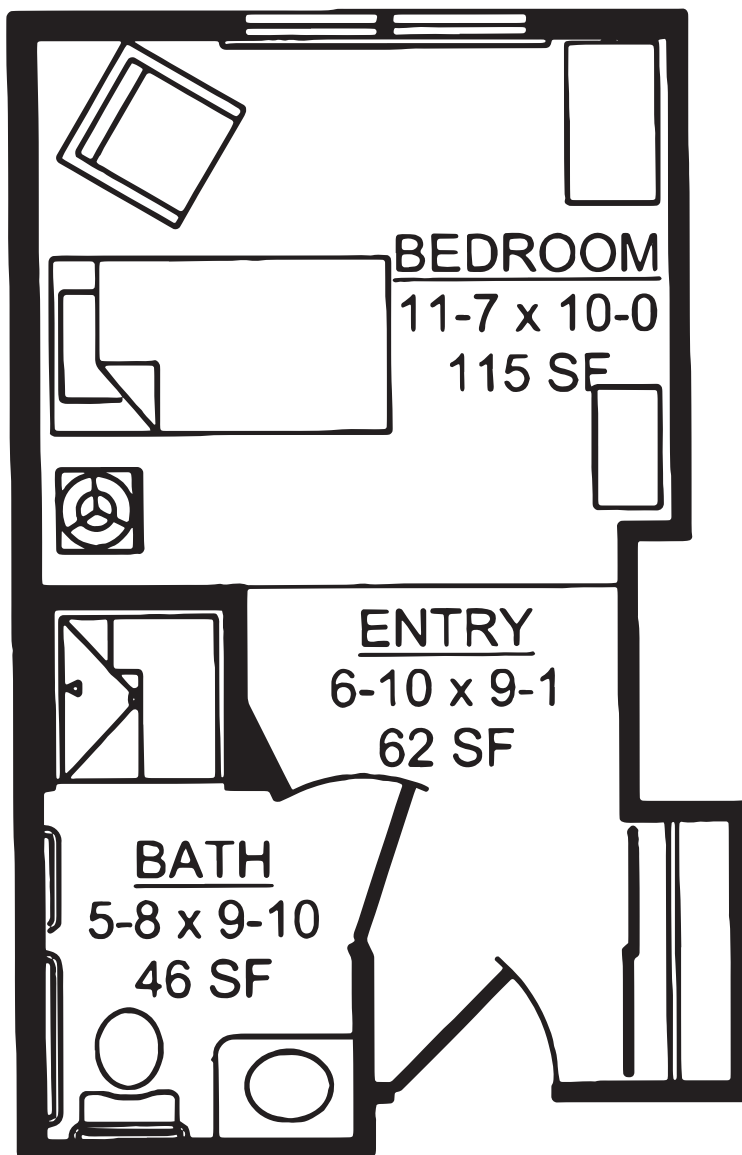
We continually strive to provide the best support and care services and to make our community one that enriches, encourages and fulfills our residents' daily lives.

Caring for individuals with cognitive loss requires special skills and training. At The Homestead at Coon Rapids, staff receives periodic up-to-date training to best serve our residents on a daily basis.

Family members are welcome anytime, and are included in making the transition to our community seamless. There are ongoing opportunities for family and friends to stay involved in the resident's day-to-day living.

APARTMENT

Floor Plans



Classic Studio

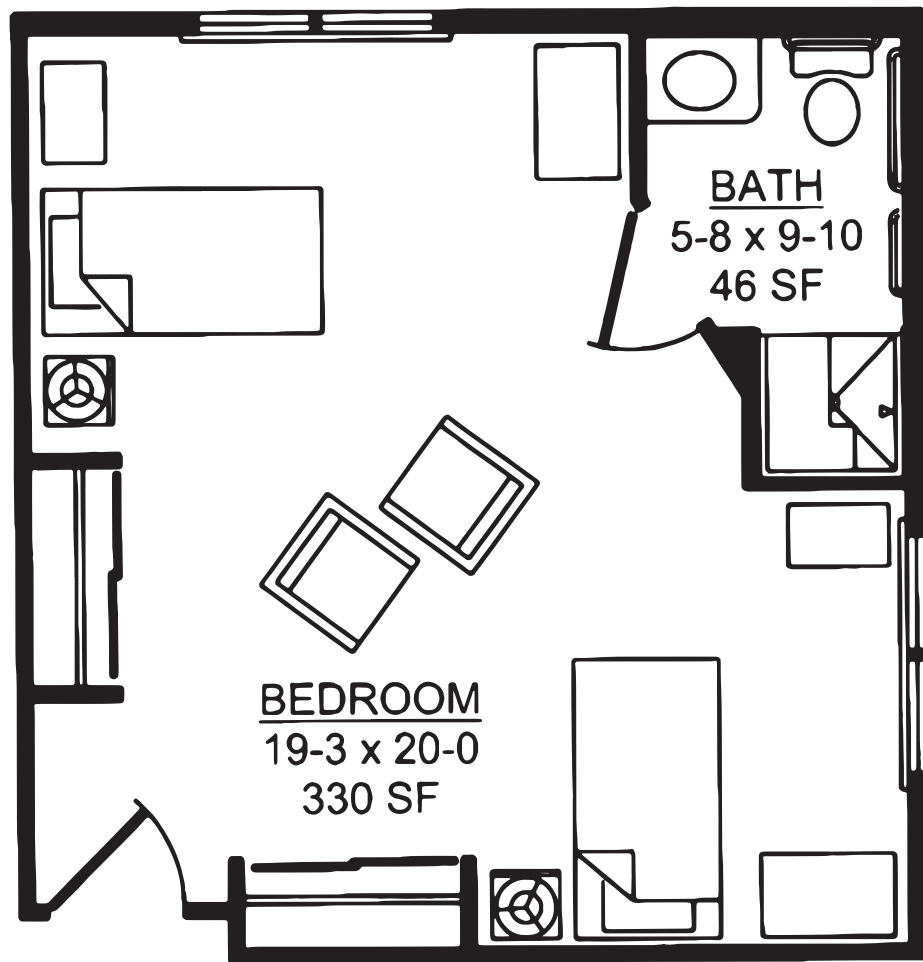
Studio

223 sq. ft.

Monthly rate: \$2,325

APARTMENT

Floor Plans



Deluxe Studio

Studio

376 sq. ft.

Monthly rate: \$3,580/single occupancy

\$1,790/double occupancy (per person)

Please ask about availability.

Features, rates and amenities are subject to change. All square footage and dimensions are approximate.

MEMORY SUPPORT

Personal Care

Personalized memory support begins with a health care assessment provided by a registered nurse, who collaborates with each resident's physician to develop individualized plans for health care and personal care services. An on-site registered nurse provides coordination for plans of care.

Admission to Home Care

Includes all assessments by a registered nurse, including admission assessments, development of an individualized plan of care and evaluation for appropriateness of home care programs.

Level I

\$3,080/month

- Registered Nurse oversight
- Personal care, such as dressing, grooming and using the bathroom is provided through verbal cueing and direction, rather than hands-on assistance
- Coordination of clinic appointments, hospital transfers and other professional services
- Electronic health record
- Medication administration
- Weekly light housekeeping services
- Weekly personal laundry (two loads)
- Incontinence is managed independently with appropriate use of incontinence products and/or verbal direction by Home Health aides. Incontinence product is paid for by resident.

Level II

\$3,520/month

- Registered Nurse oversight
- Personal care, such as dressing, grooming and using the bathroom is provided through verbal cueing or hands-on assistance
- Coordination of clinic appointments, hospital transfers and other professional services
- Electronic health record
- Medication administration
- Weekly light housekeeping services
- Weekly personal laundry (two loads)
- Incontinence managed with appropriate use of incontinence products or scheduled toileting by Home Health aides up to three (3) times per day. Incontinence product is paid for by resident.
- Assistance with one-person transfers
- Verbal redirection for reorientation or behavior management

MEMORY SUPPORT

Personal Care

Level III

\$3,980/month

- Registered Nurse oversight
- Personal care, such as dressing, grooming and using the bathroom is provided through verbal cueing or hands-on assistance
- Coordination of clinic appointments, hospital transfers and other professional services
- Electronic health record
- Medication administration
- Weekly light housekeeping services
- Weekly personal laundry (two loads)
- Incontinence managed with appropriate use of incontinence products or scheduled toileting by Home Health aides up to six (6) times per day. Incontinence product is paid for by resident.
- Complex medication management twice a day. Includes anticoagulant medications, insulin management and other medication requiring frequent monitoring of vital signs or other symptoms; Vitamin B12 injections; antibiotic injections; nebulizer treatments and wound care
- Two-person transfers
- Frequent nurse intervention of greater than two (2) changes to the plan of care in any one week
- Verbal redirection and/or professional intervention for reorientation or behavior management

A La Carte Services

- Nursing Visit – \$30.50/ up to each 15-minute increment
- Home Health aide assistance – \$12.25/ up to each 15-minute increment
- Escort - \$12.25/up to each 15-minute increment
- Laundry assistance - \$11.75/per load
- Additional housekeeping - \$7.65/up to each 15-minute increment
- Additional linen change - \$12.25/up to each 15-minute increment
- Meal delivery - \$5/per occurrence
- Vital signs - \$12.25/up to each 15-minute increment

*Elderly Waiver, MSHO and CADI funding accepted

Rates reflect cost of service only. Client or responsible party must provide all medical and personal supplies.

Volunteers of America Home Health at Coon Rapids is licensed by the Minnesota Department of Health.

Rates are effective March 1, 2021



For more information about The Homestead at Coon Rapids or to schedule a welcome tour, please call 763.233.5100 or homesteadatcoonrapids.org

The Homestead at Coon Rapids — A Senior Living and Care Community

Living and Care Choices

- Assisted Living
- Memory Support


Community Attractions

- Single-level living
- Wellness programs
- Spacious dining room
- Inviting common areas for socialization and relaxation
- Beauty & barber salon
- Community room & library
- Regularly scheduled recreational outings
- Complimentary Wi-Fi and basic cable service
- Outdoor courtyard & patio
- Easy access to shopping, dining, medical facilities and entertainment

The Homestead at Coon Rapids is a smoke-free community.

The Homestead at Coon Rapids
A Senior Living and Care Community
11372 Robinson Dr,
Coon Rapids, MN 55433

763.233.5100
homesteadatcoonrapids.org

 Follow us on Facebook



The Homestead at Coon Rapids is a Volunteers of America community. Founded in 1896, Volunteers of America is a national, faith-based, nonprofit organization dedicated to serving almost 2 million people each year.

