

The Homestead at Anoka

A Senior Living and Care Community



ASSISTED LIVING



NATIONAL
SERVICES

THE HOMESTEAD AT ANOKA

Assisted Living

At The Homestead at Anoka, a variety of well-appointed studio, one- and two-bedroom assisted living apartments are designed to accommodate whatever your day may bring. Whether you're entertaining friends or enjoying a quiet afternoon, your home is ideal for any occasion.

Special Features

- Bright, open floor plans emphasize spacious rooms with 9-foot ceilings
- Quality construction, including Pella windows
- Fully equipped kitchens in two-bedroom apartments and select one bedrooms
- Maple cabinetry and millwork
- Convenient in-home washers and dryers in many apartment homes
- Individually controlled heat and air conditioning
- Blinds on all windows
- Balconies on many floor plans
- Gas fireplaces in two-bedroom floor plan

Added Conveniences

(Included in monthly rate)

- Flexible dining options available daily
- Only 3 meal plan available for studios
- Weekly light housekeeping services
- All utilities (heat, electric, central air, water and trash)
- Complimentary wireless Internet
- Life enrichment and educational programs
- Scheduled transportation for shopping and outings
- Personal pendant urgent call system
- 24-hour staffing
- Lawn care and snow removal
- Apartment building maintenance
- Priority access to Anoka Rehabilitation and Living Center
- Use of all campus community spaces
- *It's Never 2 Late*[®] sensory program
- Professional management by Volunteers of America National Services
- Month-to-month residency agreement

Pets are welcome. Guidelines apply.

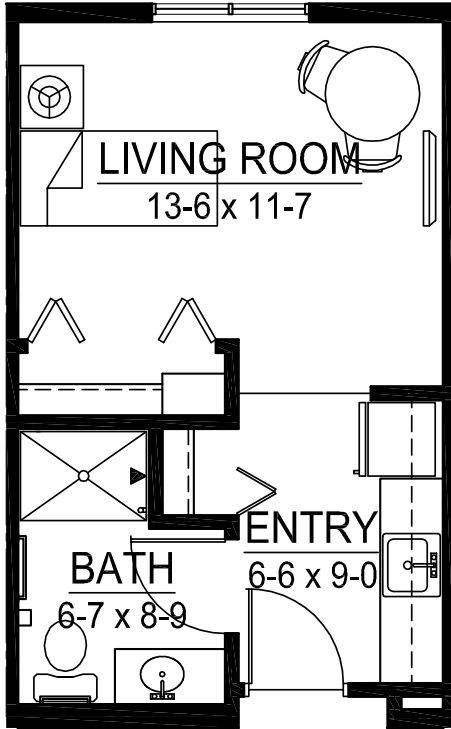
Rental Rates

Apartment Style	Square Footage	Monthly Rate
Studio	323-406	\$1,480-\$1,895
1 BR	545-782	\$2,525-\$3,120
1 BR/Deck	696-809	\$3,265-\$3,505
2 BR/Deck	1,230-1,278	\$4,405-\$4,735

Add-ons/month

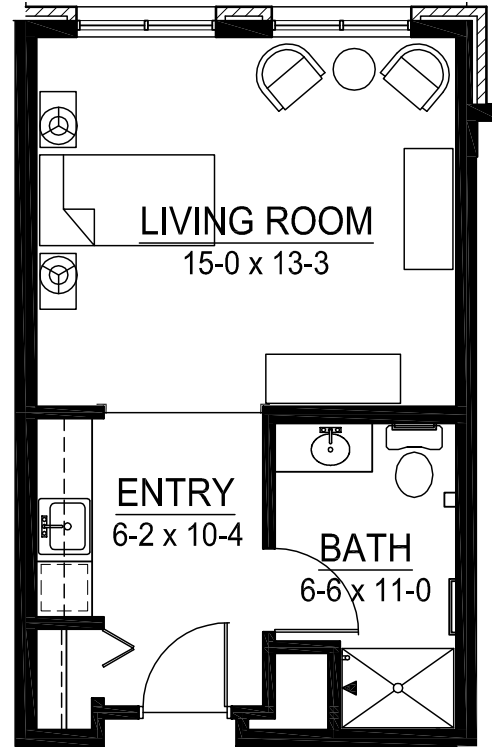
2nd Occupant	\$127
Three meals daily	\$605
Two meals daily	\$490
One meal daily	\$230
Individual meal	\$11
Garage	\$52
Storage	\$27
Telephone	\$15

APARTMENT Floor Plans



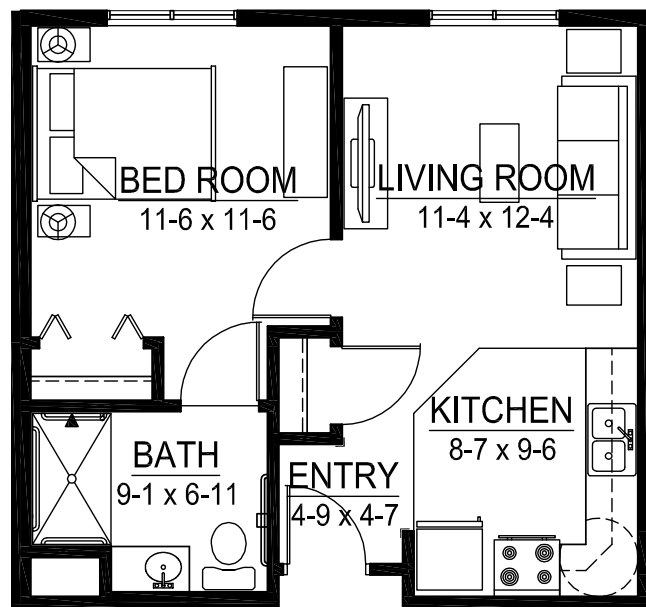
The Island

Studio
323 sq. ft.
Monthly rate: \$1,480



The Cove

Studio
406 sq. ft.
Monthly rate: \$1,895

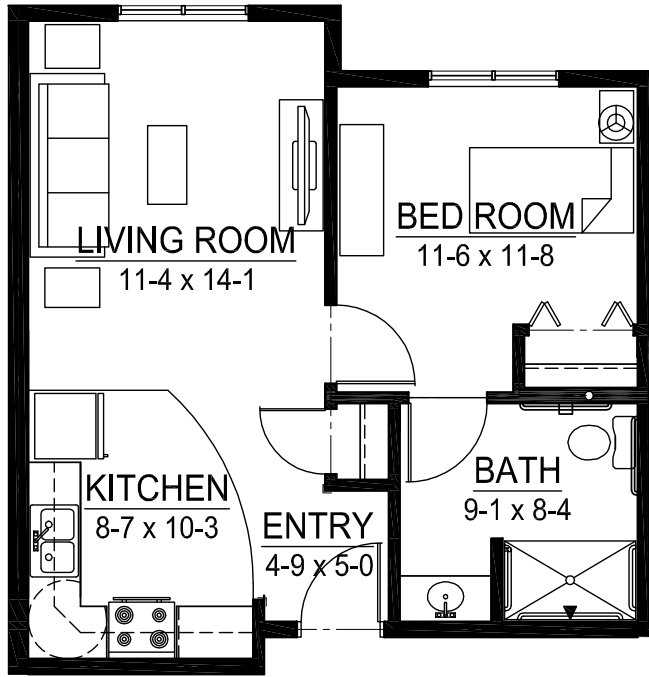


The Waters

1 bedroom
545 sq. ft.
Monthly rate: \$2,525

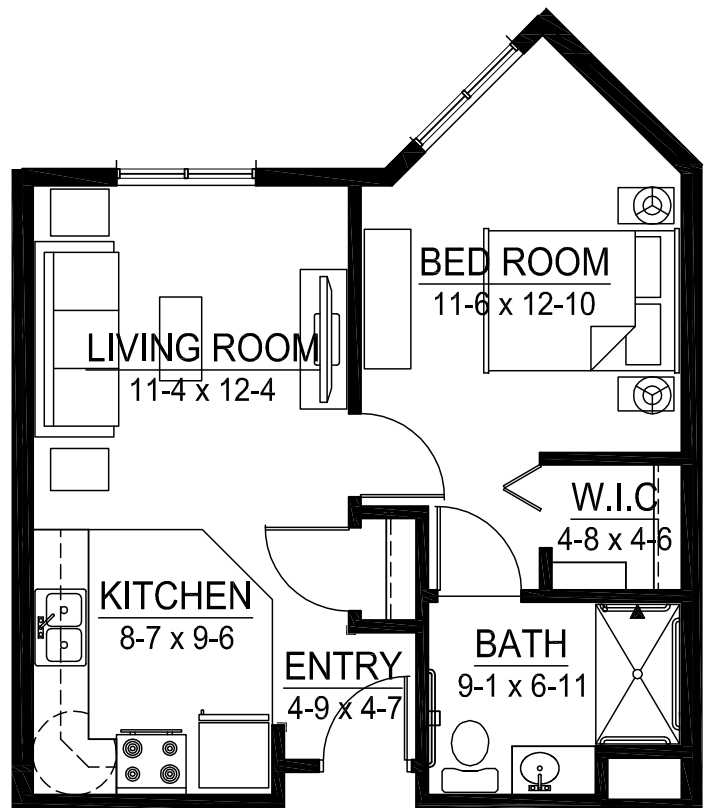
APARTMENT

Floor Plans



The Delta

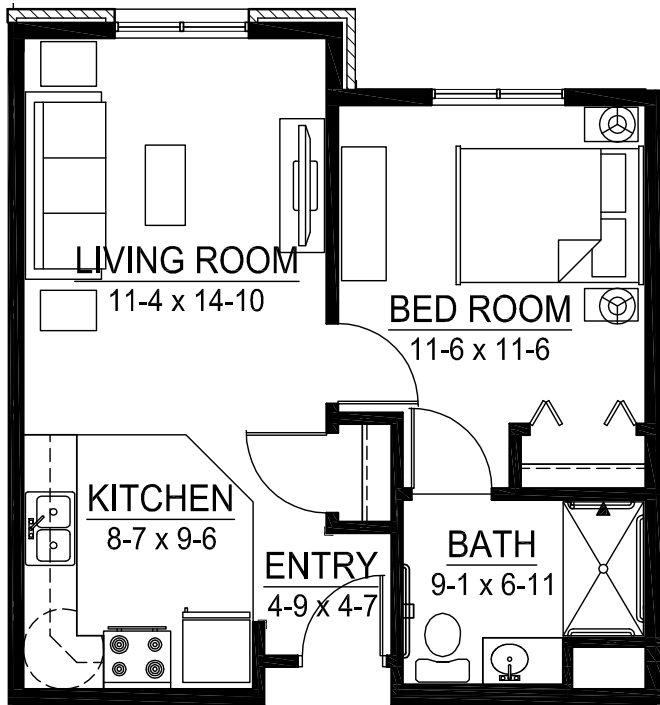
1 bedroom
562 sq. ft.
Monthly rate: \$2,725



The Rapids

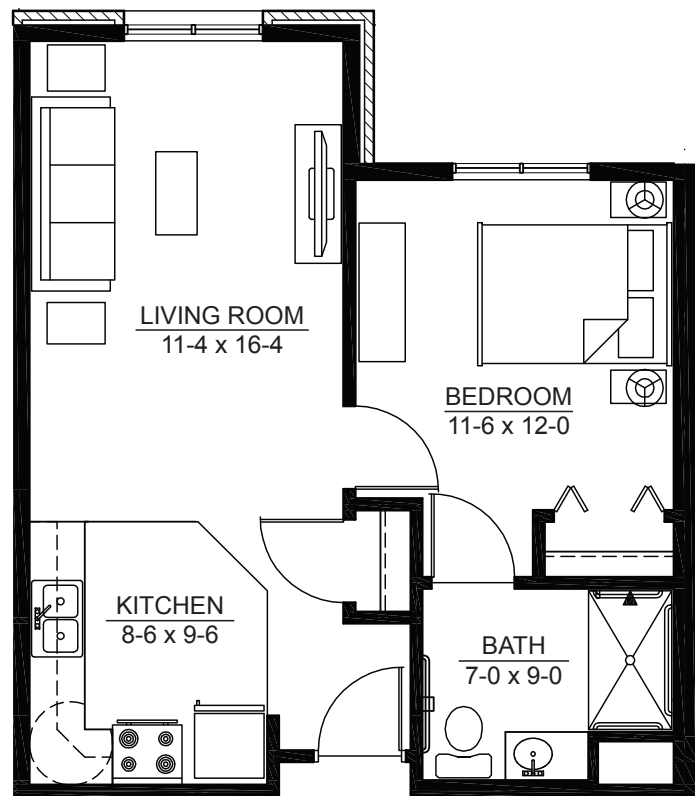
1 bedroom
575 sq. ft.
Monthly rate: \$2,725

APARTMENT Floor Plans



The Shores

1 bedroom
576 sq. ft.
Monthly rate: \$2,725

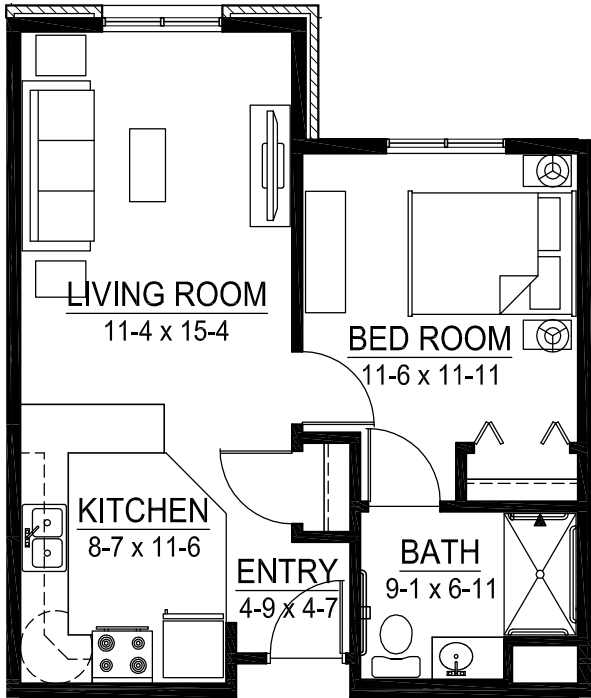


The Peninsula

1 bedroom
594 sq. ft.
Monthly rate: \$2,810

APARTMENT

Floor Plans

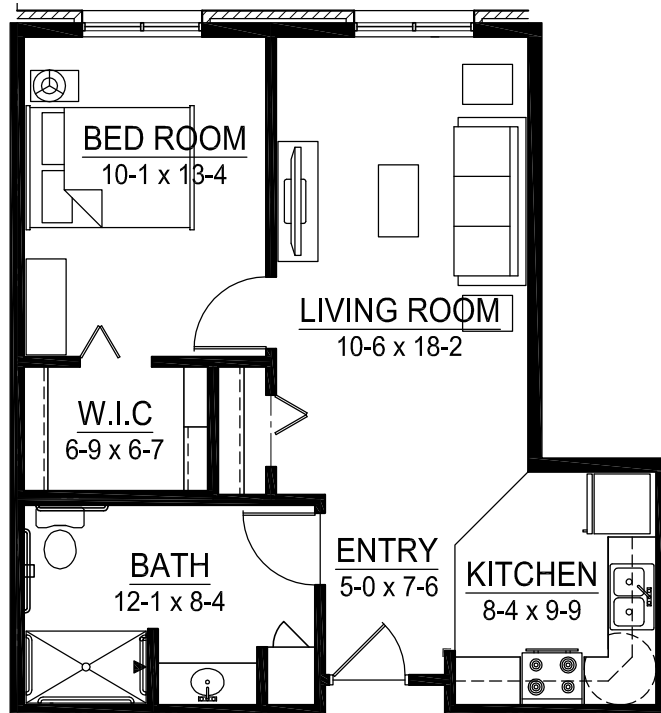


The Marina

1 bedroom

607 sq. ft.

Monthly rate: \$2,865



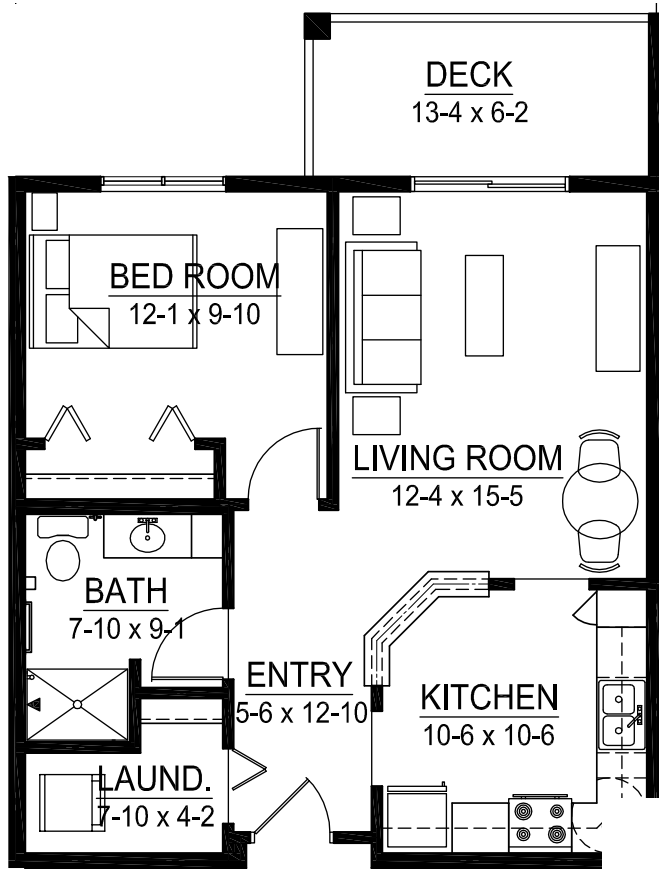
The Bluffs

1 bedroom

677 sq. ft.

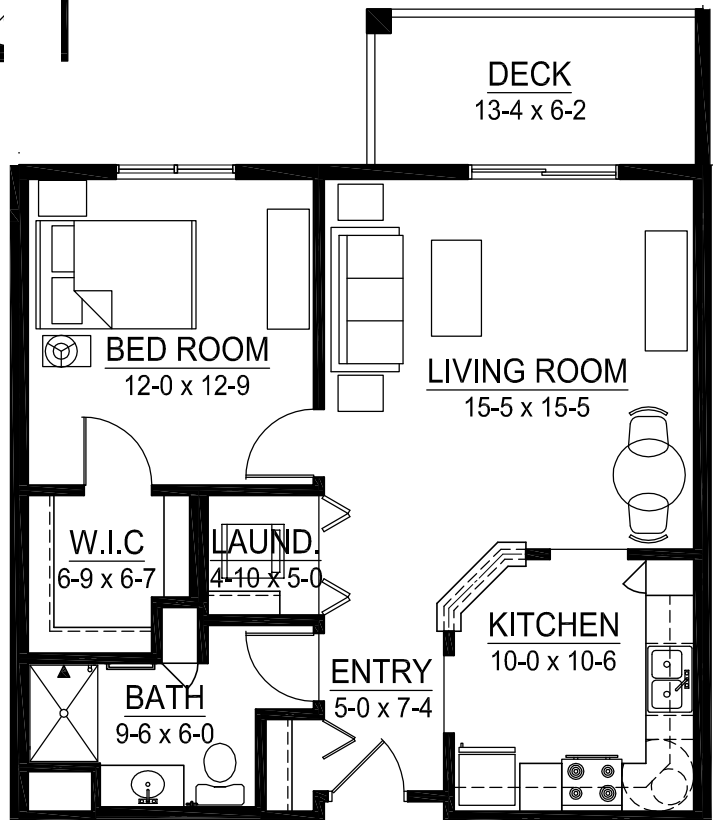
Monthly rate: \$2,980

APARTMENT Floor Plans



The Point

1 bedroom
696 sq. ft.
Monthly rate: \$3,265

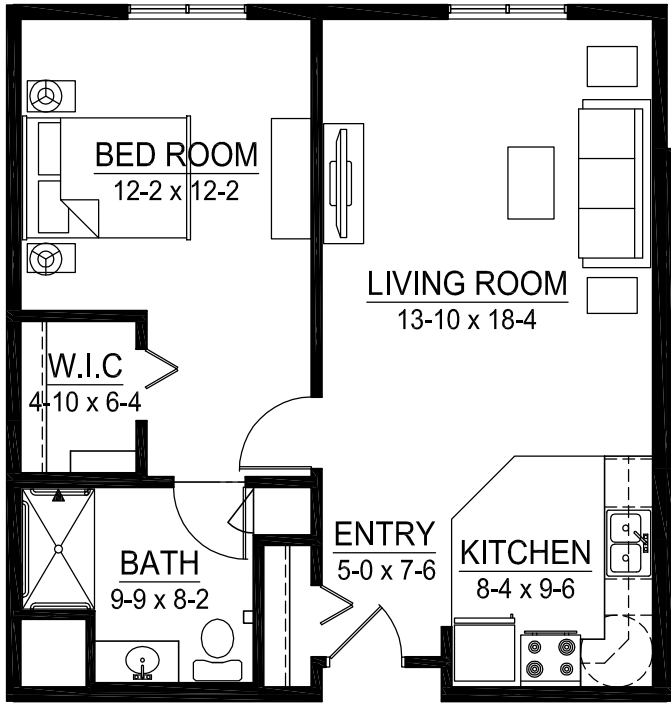


The Dunes

1 bedroom
779 sq. ft.
Monthly rate: \$3,430

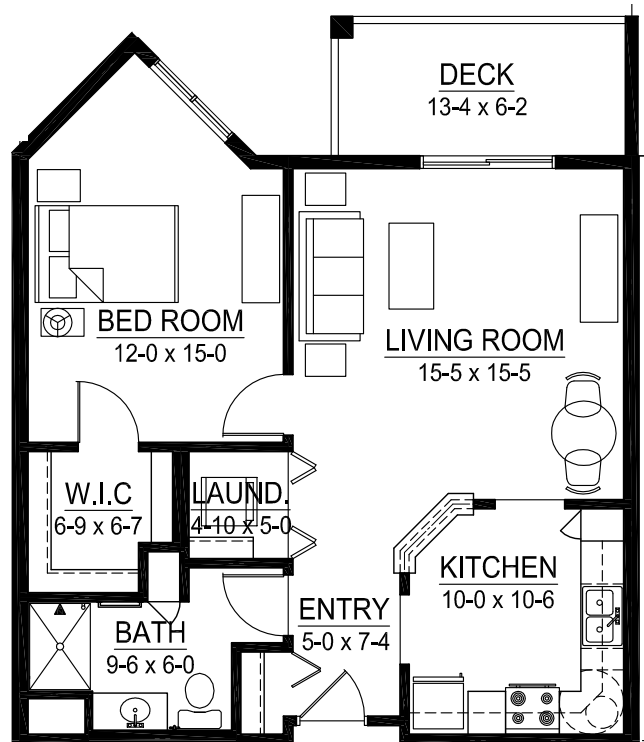
APARTMENT

Floor Plans



The Current

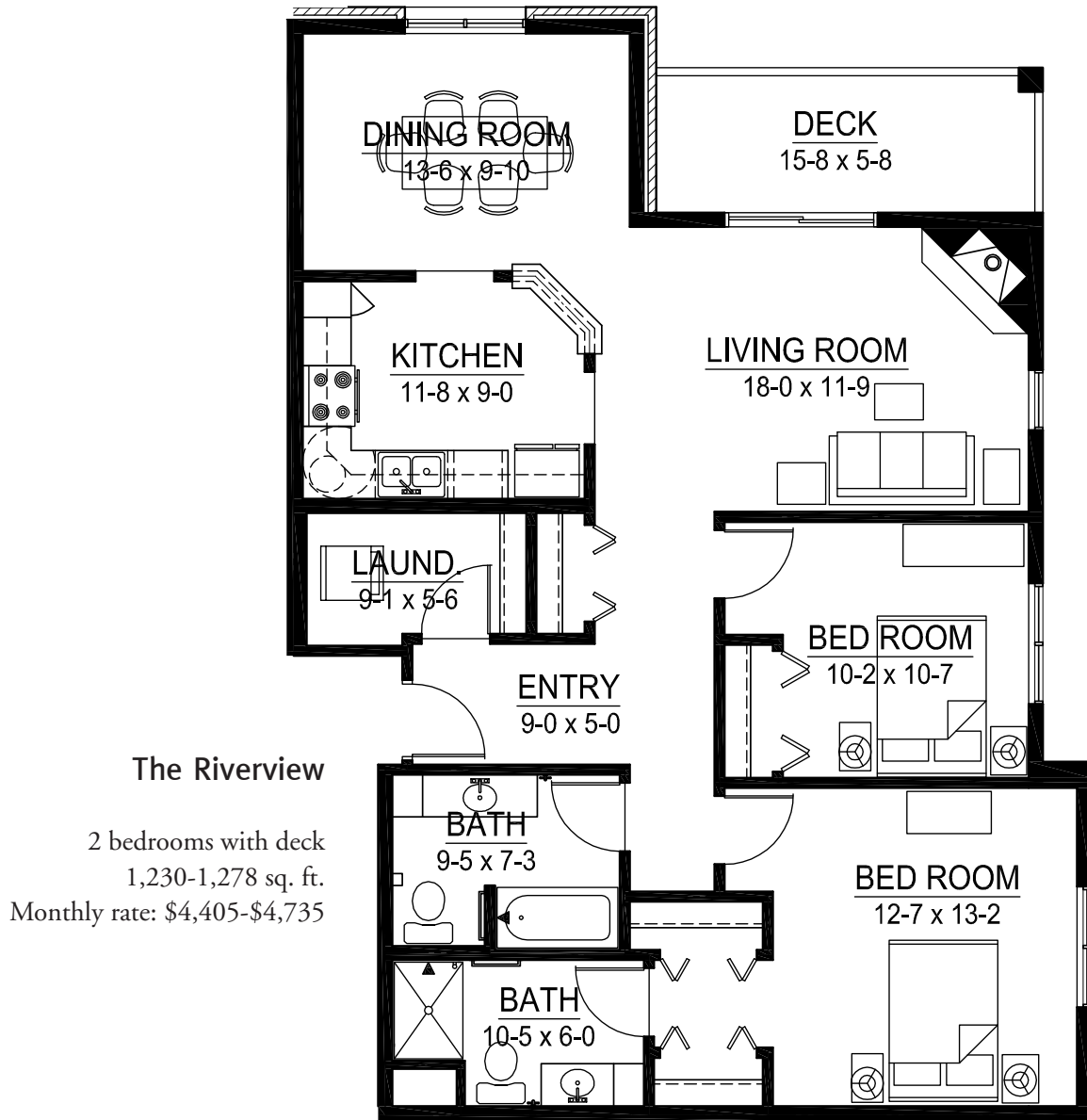
1 bedroom
782 sq. ft.
Monthly rate: \$3,120



The Marsh

1 bedroom with deck
809 sq. ft.
Monthly rate: \$3,505

APARTMENT Floor Plans



Floor plans shown depict a sampling of styles; stated dimensions and square footage are approximate.
Please ask about availability. Features, amenities and rates subject to change.

ASSISTED LIVING

Personal Care

Your personalized plan of care begins with health assessments provided by a registered nurse. Together, you'll select assisted living support that suits your needs and personal preferences. An on-site registered nurse manages your individualized plan of care, and assures your in-home assisted living needs are accommodated when and how you'd like.

Admission to Home Care

- \$390/one-time fee

Includes all assessments by a registered nurse, including admission assessments, development of an individualized plan of care and evaluation for appropriateness of home care programs.

Wellness Program

- \$360/month

- Trained caregiver on site 24-hours/day
- Registered nurse available on site or by telephone 24-hours/day
- Registered nurse maintains updated plans of care, and coordinates and supervises caregiver staff to promote quality of care
- Registered nurse visits at least every 90 days to assess appropriateness of care and services provided by health care staff
- Daily visual safety check
- Monthly blood pressure and weight monitoring
- Caregiver response to personal pendant calls for health-related emergencies such as falls, excessive bleeding, seizures and chest pain. Includes nurse follow-up. If continued care results, services will be charged at the designated incremental rate.

Nursing Visit

- \$39/up to each 15-minute increment

Injections, wound care, diabetic monitoring, foot care, laboratory orders and X-rays, pacemaker checks, etc.

Caregiver Visit

- \$14.15/up to each 15-minute increment

Assistance with daily activities such as dressing, bathing, using the bathroom, walking and transfer, escorts and reassurance checks. Caregivers also may perform medication reminders, light meal prep and bed making.

Medication Set-Up

Licensed nurse orders medication, communicates with physician, pharmacy and family, and monitors response to medications.

- Medication set-up, Homestead's consulting pharmacy (1-8 medications) — \$53/week
- Medication set-up, Homestead's consulting pharmacy (9+ medications) — \$72/week
- Order from pharmacy other than Homestead's consulting pharmacy, additional fee — \$30/week
- Mail-order medication, additional fee — \$30/week
- Set-up insulin/syringe — \$31/week
- Medication change requiring a new set-up — \$39/new set-up

ASSISTED LIVING

Personal Care

INR/Coumadin Management

- \$56/month

Lab coordination, communication with physician, order processing and medication change as needed for those on medication set up/management only. (More than once per month is charged at skilled nursing rate.)

Medication Administration

- \$14.60/visit

Caregivers may also assist with medications given by mouth or eye drops, ear drops or other routes of administration which have been taught by a registered nurse. All caregiver duties are performed under the direction of a licensed nurse.

Shower Assistance

- \$32/shower

Shower assistance by a caregiver includes basic nail and foot care with exception of residents with diabetes.

Whirlpool Bath/Spa

- \$38/bath

Bathing assistance by a caregiver to/from Spa room includes basic nail and foot care with the exception of residents with diabetes.

Housekeeping

- \$10/15 minutes

Light services including dusting around items, vacuuming, cleaning the bathroom and kitchen, sweeping, mopping and taking out the trash. No heavy lifting.

Unlimited Escort Package

- \$510/month

Unlimited escort by a caregiver throughout The Homestead, to and from meals, to activities and programs, etc.

Introductory Escort Package

- \$250/up to two weeks

- Unlimited escorts to provide orientation to The Homestead at Anoka community
- Comprehensive, ongoing evaluation for the first two (2) weeks of residence for care needs, compliance with medication regimen, introduction to Homestead residents and staff and orientation to apartment.

LTC Insurance Assistance

- \$55/month

Assist with the coordination of required clinical documents for Long Term Care insurance policies.

Laundry Assistance

- \$31/two (2) loads

Private items and/or linens are laundered, folded and put away. Additional loads are \$15.00 per load.

All services are private pay. Prices subject to change.

Wellness fee is not prorated for hospital stays or leaves of absence.

Medication charges will only be prorated month of move-in.

The Homestead at Anoka is licensed by the Minnesota Department of Health. Rates are effective March 1st, 2022.



For more information about The Homestead at Anoka or to schedule a tour, please call 763.528.6500 or visit homesteadatanoka.org.

The Homestead at Anoka— A Senior Living and Care Community

The Homestead at Anoka is a community filled with possibilities. Set amid the trails of the Rum River in historic Anoka, you'll find small town ease and sensibility, combined with the convenience and inspiration of a thriving, vibrant neighborhood.

At The Homestead, you can take comfort in knowing your needs can be met today and tomorrow, through an array of thoughtfully planned living choices and amenities.

Living and Care Choices

- Spacious, well-appointed independent living apartments
- Thoughtfully designed assisted living apartments
- Private, nurturing memory support residences
- State-of-the-art care center offering short-term rehabilitation; long-term care; cardiac care; and specialized memory support

Community Attractions


- Meditation chapel
- Rehabilitation clinic
- Fitness center
- Garden area
- Bistro
- General store
- Club lounge
- Walking trail
- Community room
- Complimentary Wi-Fi
- Restaurant-style dining
- Private dining room
- Beauty and barber salon
- Guest suite
- Outdoor courtyard

The Homestead at Anoka is a smoke-free community.

The Homestead at Anoka A Senior Living and Care Community

3002 4th Avenue
Anoka, MN 55303

763.528.6500
homesteadatanoka.org

 Follow us on Facebook



The Homestead at Anoka is a part of the Volunteers of America National Services (VOANS) family of organizations. VOANS, a wholly-owned subsidiary of Volunteers of America Inc., provides affordable housing and healthcare services in over 40 states and Puerto Rico. As a national, nonprofit, faith-based organization, VOANS is dedicated to helping those in need live healthy, safe and productive lives.

THAA AL Bro 0222

