

**The Homestead at Anoka**  
A Senior Living and Care Community



**MEMORY SUPPORT**



**NATIONAL  
SERVICES**

# THE HOMESTEAD AT ANOKA

## Memory Support

Making sure your loved one receives excellent care is your top priority. It's ours, too. Within The Homestead at Anoka's intimate memory support household, individuals with memory loss move throughout their days enjoying the freedom to be active and social while receiving person-centered care and supervision in a welcoming, appealing place to call home.

The Homestead at Anoka features the perfect blend of residential memory support with customized health services and life enrichment programs. Our compassionate, professionally trained staff takes pride in enriching the lives of our residents by celebrating individuality, supporting choice and encouraging independence whenever possible.

You can sum up our philosophy simply: we care for those we serve like we'd care for members of our own family.

### Special Features

- Comfortable residences with managed access
- Private suites
- Thoughtfully designed bathrooms with walk-in shower and grab bars
- Secure outdoor courtyard
- Specially trained staff
- Licensed nursing

3 Meal Package	\$605/mo
2nd Occupant	\$250/mo
Telephone	\$15/mo
Guest Meal	\$11

### Added Conveniences

(Included in monthly rate)

- Daily snacks
- Weekly light housekeeping
- Weekly personal laundry (two loads)
- Complimentary wireless Internet
- All utilities (heat, electric, central air, water and trash)
- Music therapy and *It's Never Too Late*® sensory program
- Planned life enrichment activities and programs based upon individual interests
- Priority access to other Homestead at Anoka living and care options based on availability
- Professional management by Volunteers of America National Services
- Month-to-month residency agreement

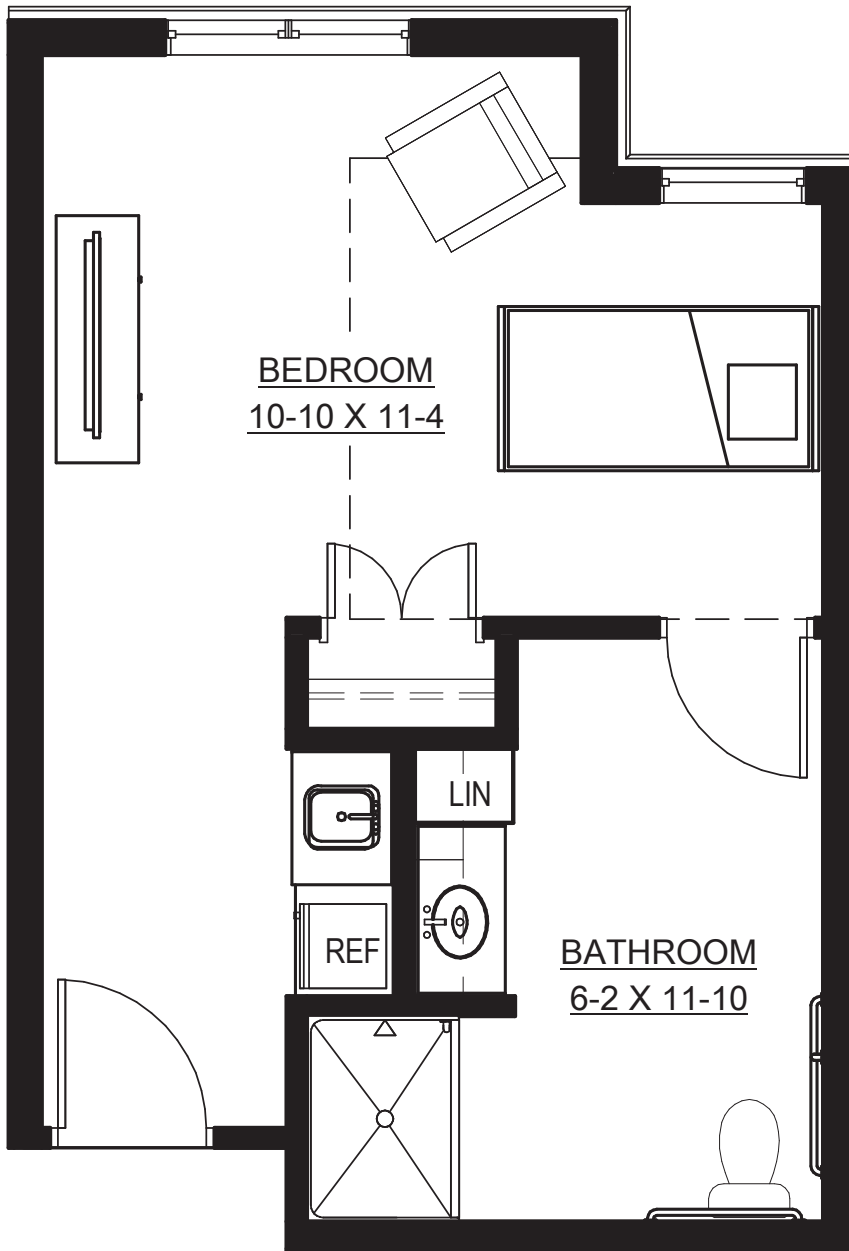
### Extra Services

(Available for additional fee)

- Up to three daily meals available
- Second occupant fee
- Access to personal care 24-hours/day through Volunteers of America Home Health at Anoka
- Additional housekeeping
- Guest meals
- Guest suite
- Beauty and barber services
- Cable TV and telephone
- Additional laundry and linen services

# APARTMENT

Floor Plans

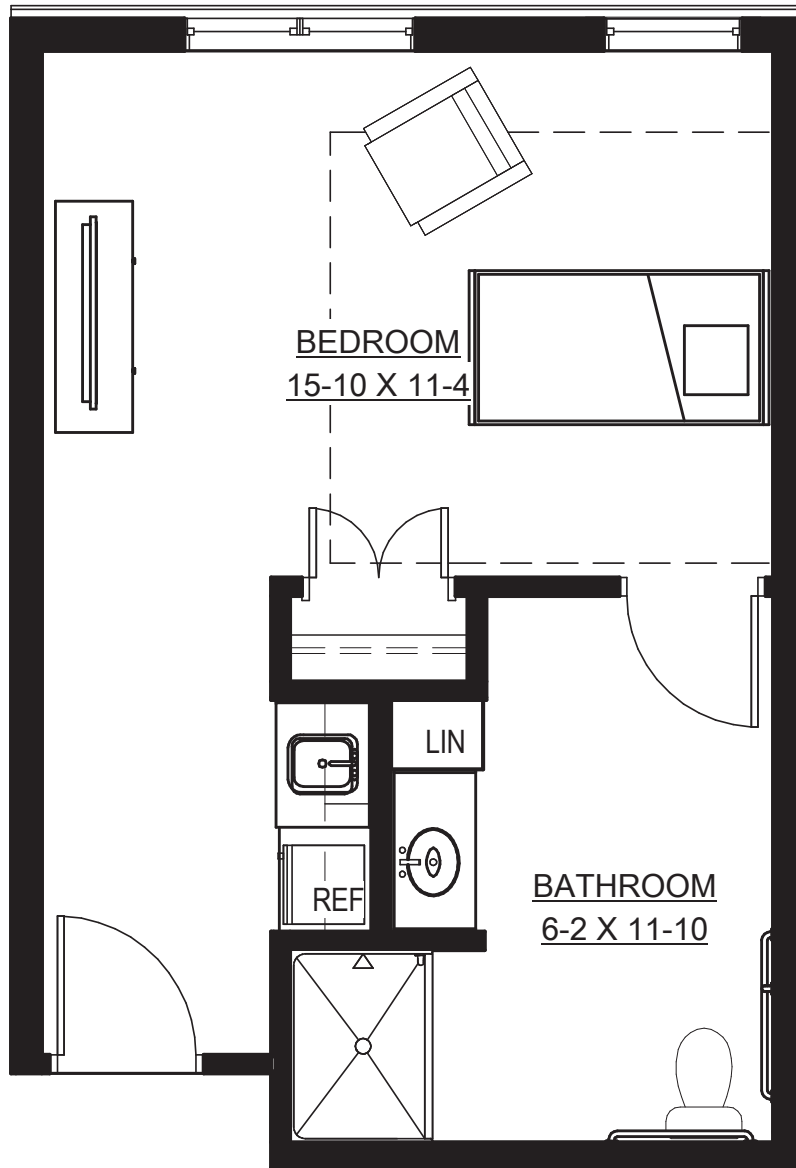


## Franklin

Studio  
380 sq. ft.  
Monthly rate: \$3,050

# APARTMENT

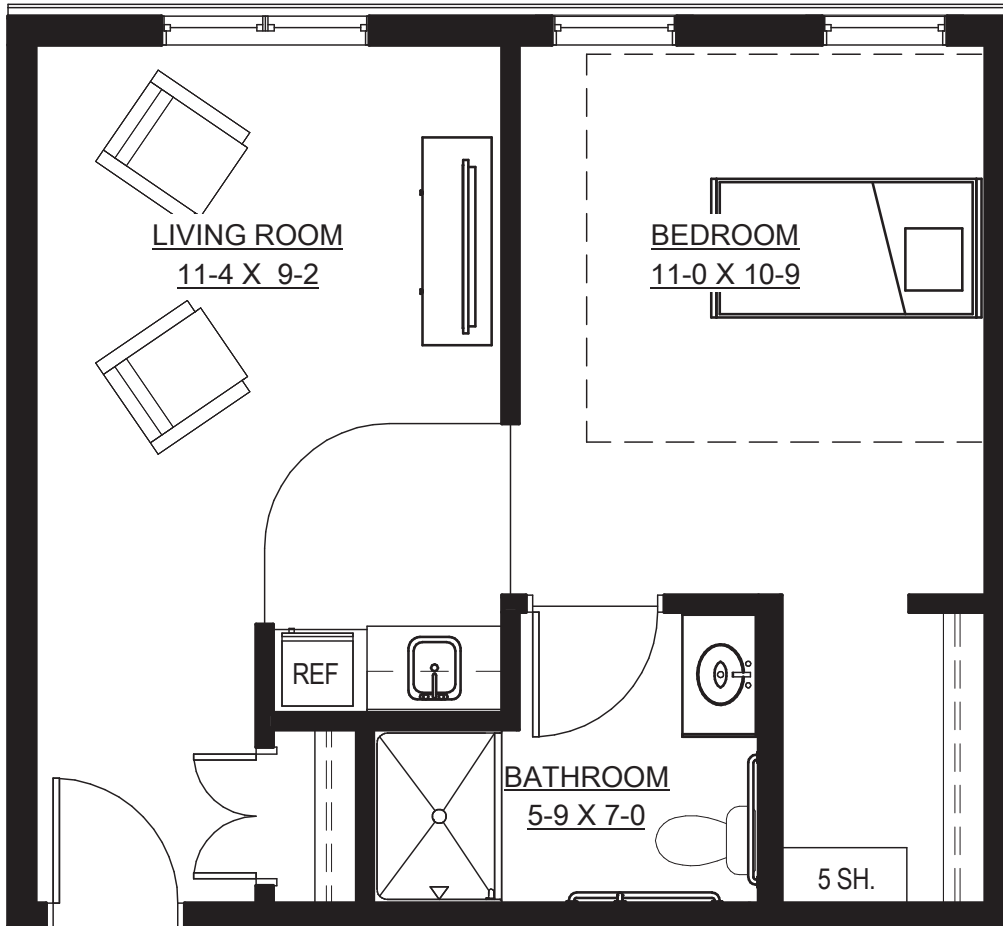
Floor Plans



## Anoka

Studio  
396 sq. ft.  
Monthly rate: \$3,120

# APARTMENT Floor Plans



## Aldrich

1 Bedroom  
514 sq. ft.  
Monthly rate: \$3,405

Floor plans shown depict a sampling of styles; stated dimensions and square footage are approximate.  
Please ask about availability. Features, amenities and rates are subject to change.

### Rental Rates

Apartment Style	Square Footage	Monthly Rate
Studios	380-396	\$3,050-\$3,120
1 BR	514	\$3,405

## MEMORY SUPPORT

### Personal Care

Personalized memory support begins with a health care assessment provided by a registered nurse, who collaborates with each resident's physician to develop individualized plans for health care and personal care services. An on-site registered nurse provides coordination for plans of care.

### Care Service Set-up

- \$390/one-time fee

Includes all assessments by a registered nurse, including admission assessments, development of an individualized plan of care and evaluation for appropriateness of home care programs.

### Level I - Basic

— \$3,185/month

- Registered nurse coordination
- Coordination of clinic appointments, hospital transfers and other professional services
- Electronic health record
- Medication set-up – including medication ordering and communication with physician, pharmacy and family
- Medication administration up to three (3) times per day
- Personal care, such as dressing, grooming and using the bathroom is provided through verbal cueing and direction, rather than hands-on assistance
- Bathing is provided two (2) times a week through verbal cueing and direction, rather than hands-on assistance
- Continence is managed with the use of continence products. Continence product is paid for by resident
- Dining set-up and observation

### Level II - Enhanced

— \$3,685/month

- Registered nurse oversight
- Coordination of clinic appointments, hospital transfers and other professional services
- Electronic health record
- Medication set-up – including medication ordering and communication with physician, pharmacy and family
- Personal care such as dressing, grooming and using the bathroom is provided through verbal cueing and direction, as well as hands-on assistance
- Medication administration four (4) or more times per day
- Bathing is provided three (3) times a week through verbal cueing, as well as hands-on assistance
- Incontinence is managed with the use of incontinence products and/or routine assistance using the bathroom. Incontinence product is paid for by resident
- Dining set-up, food set-up and observation with verbal cueing
- Simple staff intervention may be required to manage/redirect resident

### Level III - Advanced

— \$4,745/month

- Ordering from pharmacy other than The Homestead's consulting pharmacy
- Registered nurse coordination
- Coordination of clinic appointments, hospital transfers and other professional services
- Electronic health record

## MEMORY SUPPORT

### Personal Care

- Medication set-up – including medication ordering and communication with physician, pharmacy and family
- Complex medication monitoring and administration, including, but not limited to: Coumadin, insulin management (not sliding scale), oxygen management, nebulizers, and wound care (supplies paid for by resident)
- Incontinence is managed with the use of continence products and scheduled assistance using the bathroom. Incontinence product is paid for by resident
- Personal care such as dressing, grooming and using the bathroom is provided through verbal cueing and direction, as well as hands-on assistance
- Bathing is provided three (3) times a week through verbal cueing as well as hands-on assistance
- Assistance with one-person transfers and walking
- Dining set-up, food set-up and observation with occasional, one-on-one assistance (Up to 7 hours/week)
- Regular staff intervention may be required to manage/redirect resident
- May be recovering from a hospital or nursing home stay
- Caregiver at all meals for modified diet monitoring
- Tube feeding
- Lymphedema wraps
- Complex monitoring and coordination of hospice care
- EZ stand assistance
- Two hour safety checks on a limited short term case by case basis

### A La Carte Additional Options

(Available for additional fee)

- Additional shower/bath assistance
- Specialized nurse visits
- Ordering from pharmacy other than The Homestead's consulting pharmacy

### LTC Insurance Assistance

— \$55/month

Assist with the coordination of required clinical documents for LTC insurance policies

### Level IV - Specialty

— \$5,150/month

Includes all of the care and services included in the Advanced Service Package plus one or more of the following services:

- Unstable medical condition requiring frequent nurse intervention of greater than two (2) changes to the plan of care in a week

*All services are private pay. Prices subject to change.*

*The Homestead at Anoka is licensed by the Minnesota Department of Health.*

*Rates are effective March 1st, 2022.*



For more information about The Homestead at Anoka or to schedule a tour, please call 763.528.6500 or visit [homesteadatanoka.org](http://homesteadatanoka.org).

## The Homestead at Anoka— A Senior Living and Care Community

The Homestead at Anoka is a community filled with possibilities. Set amid the trails of the Rum River in historic Anoka, you'll find small town ease and sensibility, combined with the convenience and inspiration of a thriving, vibrant neighborhood.

At The Homestead, you can take comfort in knowing your needs can be met today and tomorrow, through an array of thoughtfully planned living choices and amenities.

### Living and Care Choices

- Spacious, well-appointed independent living apartments
- Thoughtfully designed assisted living apartments
- Private, nurturing memory support residences
- State-of-the-art care center offering short-term rehabilitation; long-term care; cardiac care; and specialized memory support

### Community Attractions

- Meditation chapel
- Rehabilitation clinic
- Fitness center
- Garden area
- Bistro
- General store
- Club lounge
- Walking trail
- Community room
- Complimentary Wi-Fi
- Restaurant-style dining
- Private dining room
- Beauty and barber salon
- Guest suite
- Outdoor courtyard

*The Homestead at Anoka is a smoke-free community.*

**The Homestead at Anoka**  
**A Senior Living and Care Community**  
3002 4th Avenue  
Anoka, MN 55303  
763.528.6500  
[homesteadatanoka.org](http://homesteadatanoka.org)



The Homestead at Anoka is a part of the Volunteers of America National Services (VOANS) family of organizations. VOANS, a wholly-owned subsidiary of Volunteers of America Inc., provides affordable housing and healthcare services in over 40 states and Puerto Rico. As a national, nonprofit, faith-based organization, VOANS is dedicated to helping those in need live healthy, safe and productive lives.

THAA MS Bro 0222

