

Elder Homestead
A Senior Living and Care Community



ASSISTED LIVING



**NATIONAL
SERVICES**

ELDER HOMESTEAD Assisted Living

At Elder Homestead, a variety of well-appointed studio, one- and two-bedroom assisted living apartments are designed to accommodate whatever your day may bring. Whether you're entertaining friends or enjoying a quiet afternoon, your home is ideal for any occasion.

Added Conveniences

(Included in monthly rate)

- Access to personal care 24 hours/day
- Daily healthy snacks
- Weekly light housekeeping services
- All utilities (excluding phone)
- Basic cable television service
- Life enrichment and educational programs
- Scheduled transportation for outings
- Personal pendant urgent call system
- Complimentary Wi-Fi
- Apartment and building maintenance
- Use of all community spaces
- Professional management by Elder Homestead
- Month-to-month residency agreement
- Regular Maintenance
- Complimentary use of Laundry Facilities

Special Features

- Bright, open floor plans
- Kitchenette in each apartment
- Thoughtfully designed bathroom, with step-in shower and grab bars
- Individually controlled heat and air conditioning
- Blinds on all windows

Security Deposit

Pet Deposit (nonrefundable)

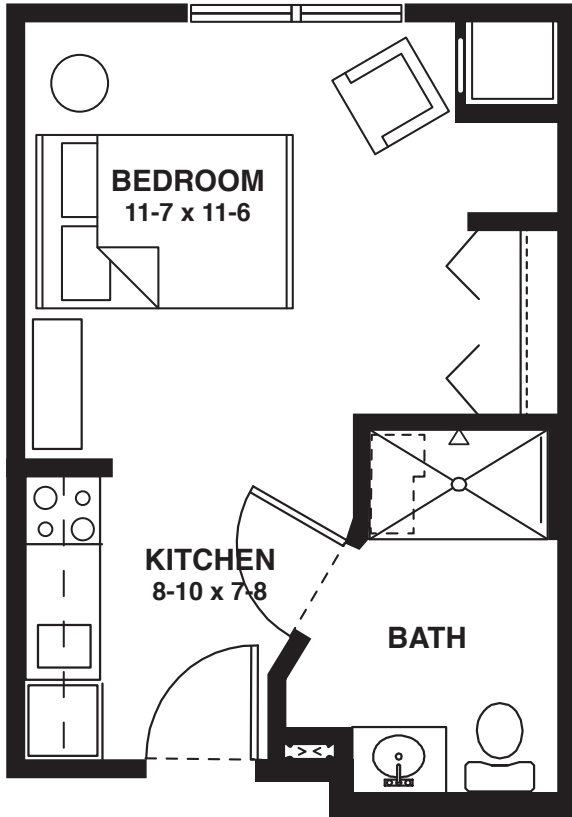
Additional Services

- 3-Meal Daily
- Meal Delivered
- Guest/Individual Meal
- Guest Lodging
- Key or FOB Additional/Replacement
- Apartment Transfer Fee
- Phone
- Personnel (30-minute minimum)
- Maintenance (30-minute minimum)
- Additional Housekeeping
- Pendant Replacement
- Storage Locker
- Care Services Set-up
- Introductory Package - 2 Weeks
- Nurse Visit
- Medication Set-up: 1-8 Meds**
- Medication Set-up: 9+ Meds**
- Medication Administration
- Non-Emergency Caregiver Response
- Laundry Assistance
- Laundry Above Two Loads
- Escort up to 15 Minutes
- Foot Soak/Nail Care
- Wellness Program
- Caregiver
- Medi-Planner
- New Medication Set-up
- INR/Anticoagulant Package
- Insulin (one-two or more)
- Additional Accu Checks
- Bath/Shower Assistance
- Unlimited Escort

*** Billed in 15-minute increments (after minimum if one exists)**

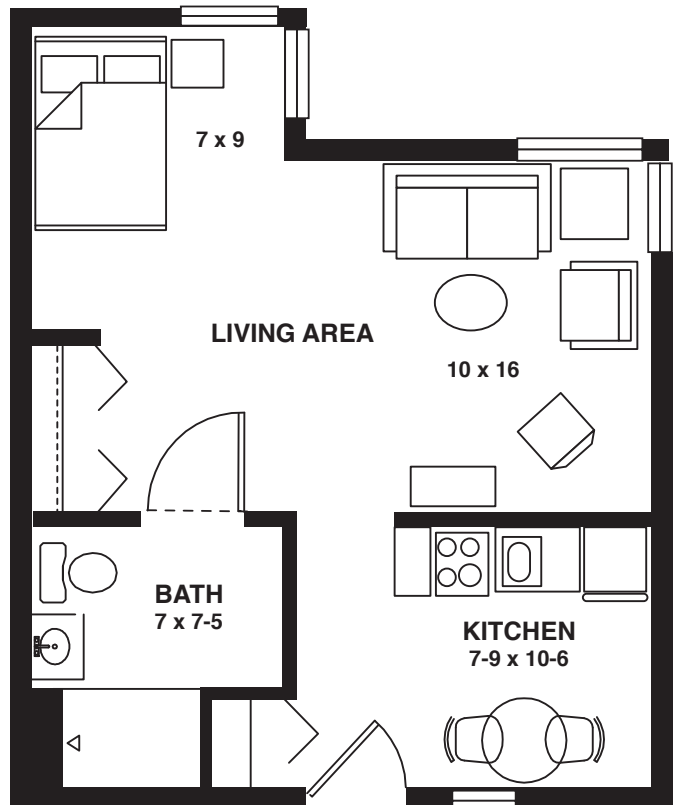
**** Excludes Insulin**

APARTMENT Floor Plans



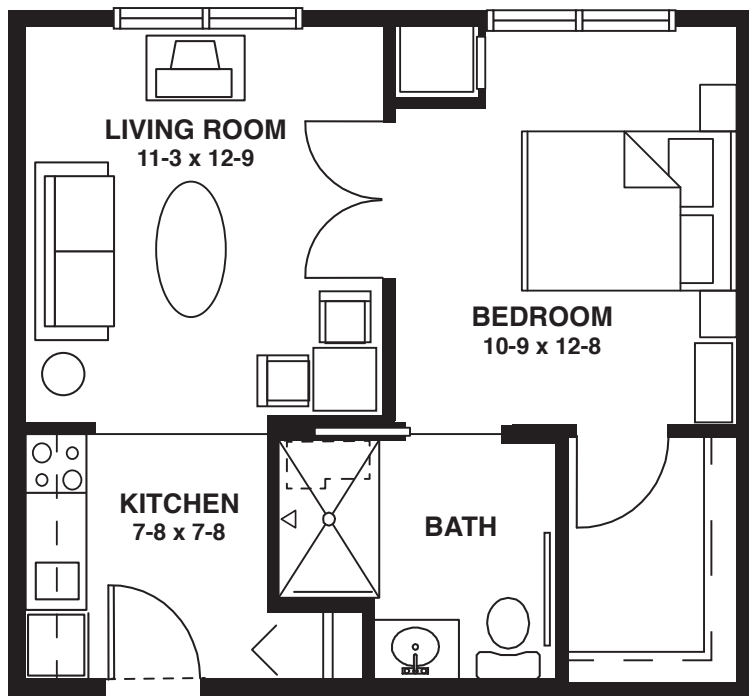
Juniper
Studio
315 sq. ft.

Elm
Studio
409 sq. ft.



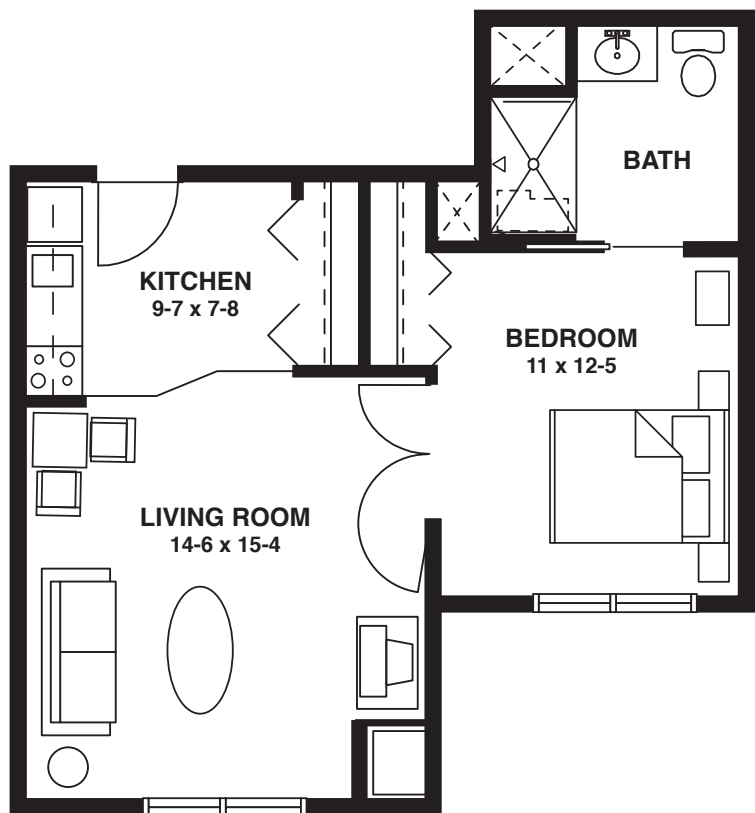
APARTMENT

Floor Plans



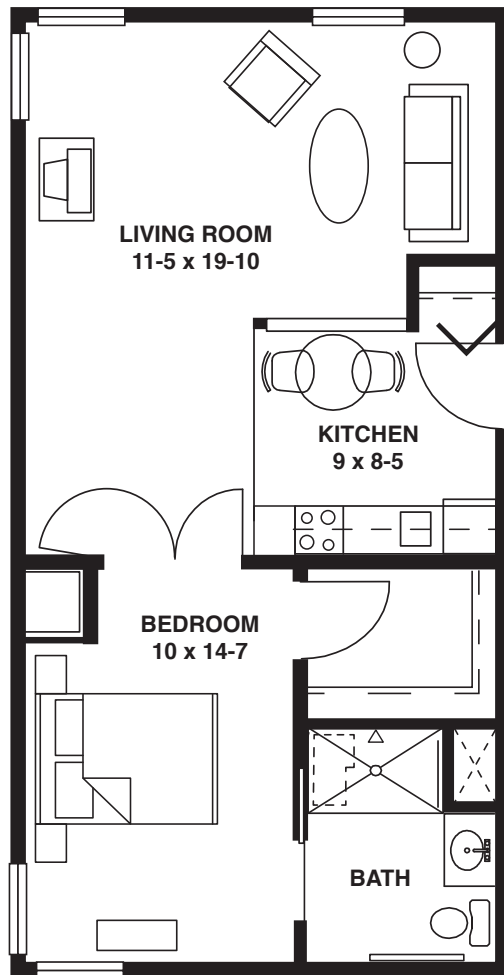
Cypress
1 bedroom
499 sq. ft.

Silverbell
1 bedroom
588 sq. ft.



APARTMENT

Floor Plans



Rosewood

1 bedroom
658 sq. ft.

Please ask about availability. Features and amenities are subject to change.



ASSISTED LIVING

Personal Care

Your personalized plan of care begins with health assessments provided by a registered nurse. Together, you'll select assisted living support that suits your needs and personal preferences.

An on-site registered nurse manages your individualized plan of care, and assures that you receive the care you expect and deserve right in the comfort of your own apartment.

Care Service Set-up

Includes all assessments by a registered nurse, development of an individualized plan of care and evaluation for appropriateness of home care programs.

Wellness Program

- all Assisted Living residents

- Trained home health staff on-site 24 hours/day
 - Registered nurse available on-site or by telephone 24 hours/day
 - Registered nurse maintains updated plans of care, coordinates and supervises home health staff to promote quality of care
 - Registered nurse visits at least every 90 days to assess appropriateness of care and services provided by health care staff
 - Monthly blood pressure and weight monitoring
 - Caregiver response to personal pendant calls for health-related emergencies such as falls, excessive bleeding, seizures and chest pain. Includes nurse follow-up. If continued care results, services will be charged at the designated incremental rate.
-

Nursing Visit

Injections, wound care, diabetic monitoring, foot care, laboratory orders and X-rays, pacemaker checks, etc.

Caregiver

Assistance with daily activities such as dressing, grooming, bathing, using the bathroom, walking and transfers, escorts and reassurance checks. Caregivers may also perform medication reminders, light meal prep and bed making.

Medication Set-up

Licensed nurse orders medication, communicates with physician, pharmacy and family, and monitors response to medications.

- Basic (1-8 medications)
 - Complex (9+ medications)
 - Additional charge if a medi-planner is used
 - Each additional medication requiring a new set-up will be charged per time
-

ASSISTED LIVING

Personal Care

Medication Administration

Caregivers may also assist with medications given by mouth or eye drops, ear drops or other routes of administration which have been taught by a registered nurse. All caregiver duties are performed under the direction of a licensed nurse.

INR/Anticoagulant Package

Nurse will: coordinate with the lab, communicate with physician, order processing and medication changes as needed. (For residents receiving medication set-up/management only). If more times per month are required, they will be charged at the skilled nursing rate listed above.

Insulin Package

Includes assistance with administration of insulin, using prefilled insulin pens & checking blood sugar levels (for residents who do not have the insulin assistance, blood sugar level checks will be charged at the Caregiver ala carte rate)

Bath/Shower Assistance

Shower or bathing assistance by a caregiver includes basic nail and foot care with exception of residents with diabetes.

Unlimited Escort Package

Unlimited escort by a caregiver throughout Elder Homestead, to and from meals, to activities and programs, etc.

Escort

One-way escort by staff

Laundry Assistance

Private items and/or linens are laundered, folded and put away. Additional loads are \$12.25 each.

Personalized Service

Services not included in the Home Health agreement (non-medical).

Maintenance - Special Projects (half hour minimum)

All services are private pay. Wellness fee is not prorated for hospital stays or leaves of absence. Medication charges will only be prorated month of move-in. Volunteers of America Home Health at Elder Homestead is licensed by the Minnesota Department of Health.



For more information about Elder Homestead or to schedule a welcome tour, please call 952.283.2600 or visit elderhomestead.org.

Elder Homestead — A Senior Living and Care Community

Living and Care Choices

- Assisted Living
- Memory Support

Community Attractions

- Lovely walking trails
- Screened-in wrap-around porches for utmost relaxation
- Inviting community rooms and recreation rooms
- Beauty and barber salon
- Restaurant-style dining
- Robust Life Enrichment program
- Spiritual care services on-site
- Complimentary Wi-Fi

Elder Homestead is a smoke-free community.

Pets are welcome. Guidelines apply.



Elder Homestead
11400 4th Street North
Minnetonka, MN 55343
952.283.2600
Elderhomestead.org
 Follow us on Facebook

Elder Homestead is a part of Volunteers of America National Services (VOANS). VOANS is a wholly-owned subsidiary of Volunteers of America, Inc. - a national, nonprofit, faith-based organization. © 2022 Volunteers of America National Services. All Rights Reserved. We are designated tax-exempt under section 501(c)3 of the Internal Revenue Code.

Elder Homestead AL BROCHURE 0722

