

# Maplewood Senior Living

A Senior Living and Care Community



## THE HOMESTEAD AT MAPLEWOOD

Assisted Living



NATIONAL  
SERVICES

# THE HOMESTEAD AT MAPLEWOOD

## Assisted Living

Enjoy life to the fullest at The Homestead at Maplewood, on the campus of Maplewood Senior Living. We're a welcoming community where your needs are anticipated and accommodated—a comfortable, cheerful place you'll be happy to call home.

Whatever your day may bring, The Homestead at Maplewood is designed to cater to your every need. Our studio, one-and two-bedroom apartment homes are ideal for any occasion—whether you're entertaining friends or enjoying a quiet afternoon. You can take comfort in knowing your needs can be met today and tomorrow, through a wide array of amenities and services available right on campus.

### Special Features

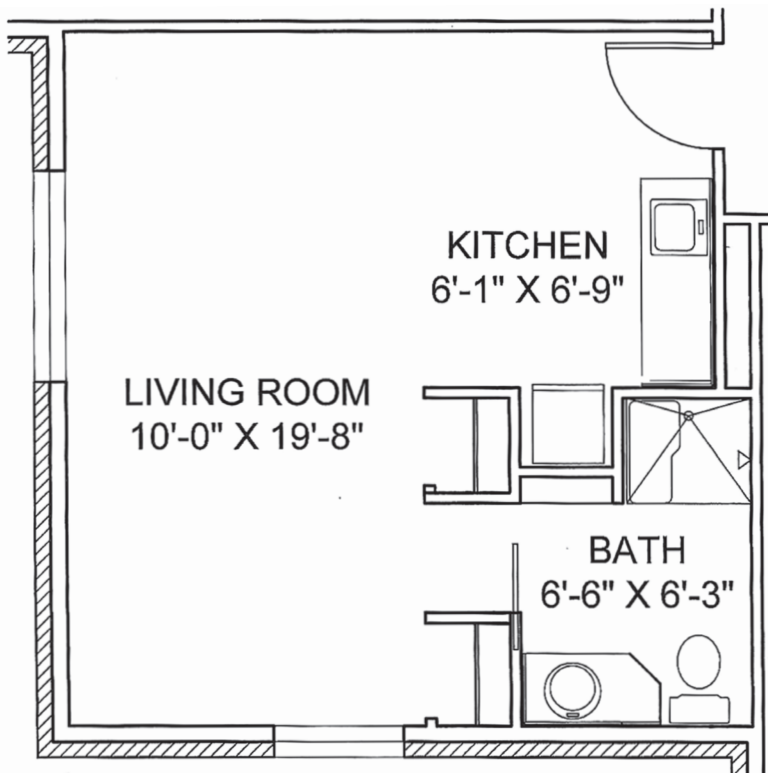
- Bright, open floor plans
- Thoughtfully designed bathrooms with walk-in shower and grab bars
- Kitchenette in each apartment
- Individually controlled heat and air conditioning unit
- Blinds on all windows
- Access to personal care 24 hours/day

### Added Conveniences Available

- Daily Snacks
- Emergency response pendant
- Weekly light housekeeping services
- Linen changes
- All utilities (excluding telephone and cable television)
- Complimentary use of laundry facilities
- Complimentary Wi-Fi
- Planned life enrichment activities designed to meet the physical, social, emotional, intellectual, spiritual and occupational needs of our residents
- Scheduled transportation for outings
- Use of all community spaces
- Apartment and building maintenance
- Month-to-month contract
- Use of It's Never Too Late (iN2L) person-centered computer system

| Apartment Style              | Square Footage |
|------------------------------|----------------|
| Studio                       | 400-472        |
| 1 BR                         | 461-750        |
| 2 BR                         | 643            |
| Care Services Setup Fee      |                |
| Reservation Fee              |                |
| Security Deposit             |                |
| Second Occupant Fee          |                |
| Pet Deposit (non-refundable) |                |

## APARTMENT Floor Plans

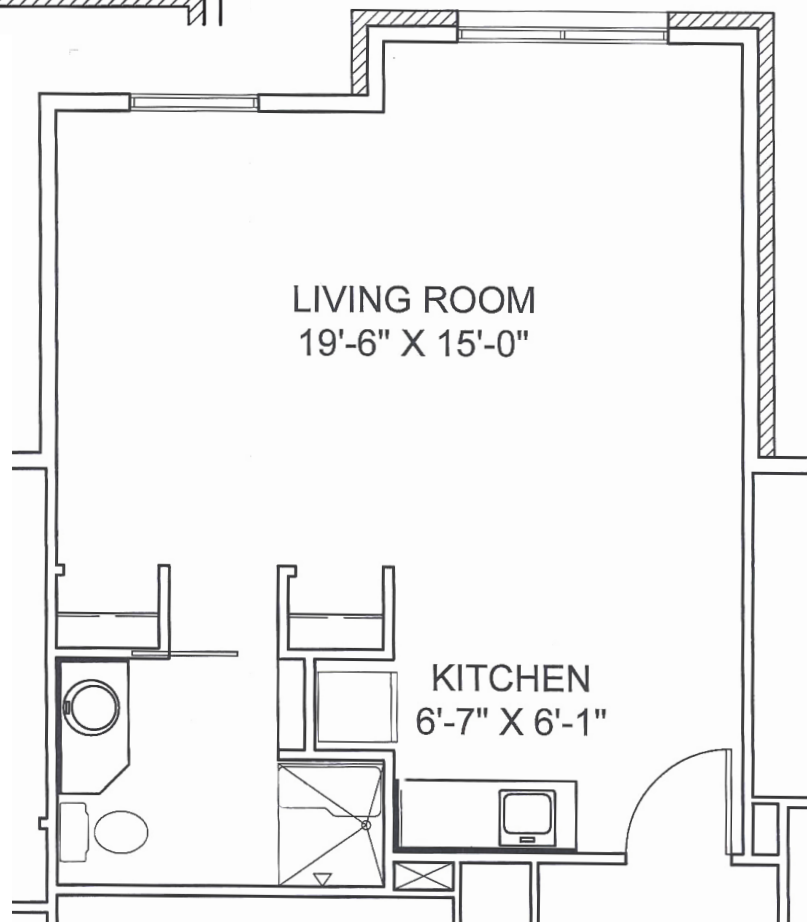


**The Bell**

Studio  
400 sq. ft.

**The Carver**

Studio  
472 sq. ft.

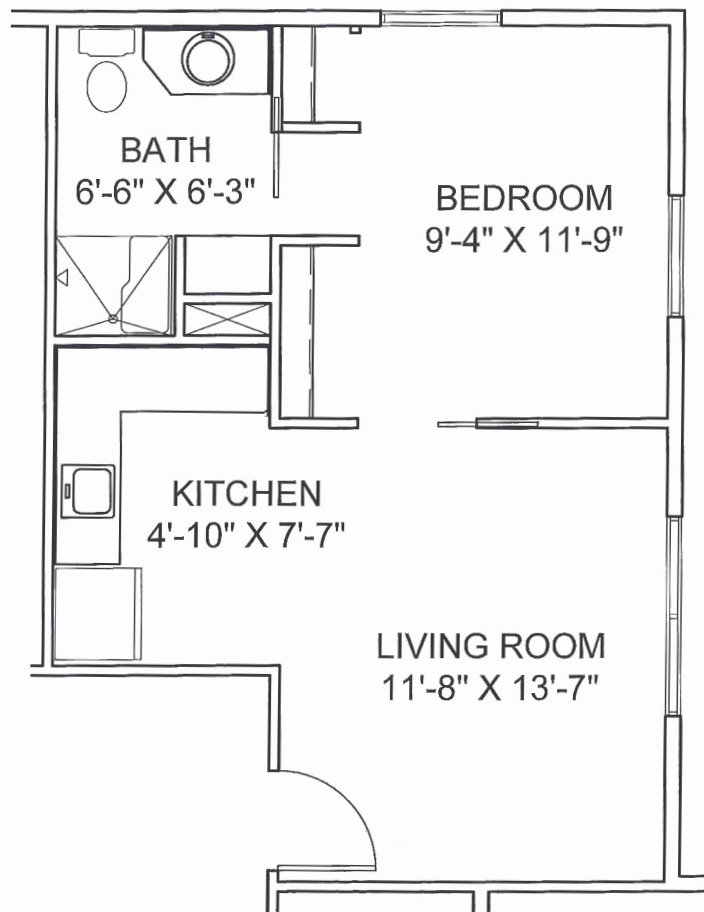


Please ask about availability. Features and amenities are subject to change.  
All square footage and dimensions are approximate.

## APARTMENT

### Floor Plans

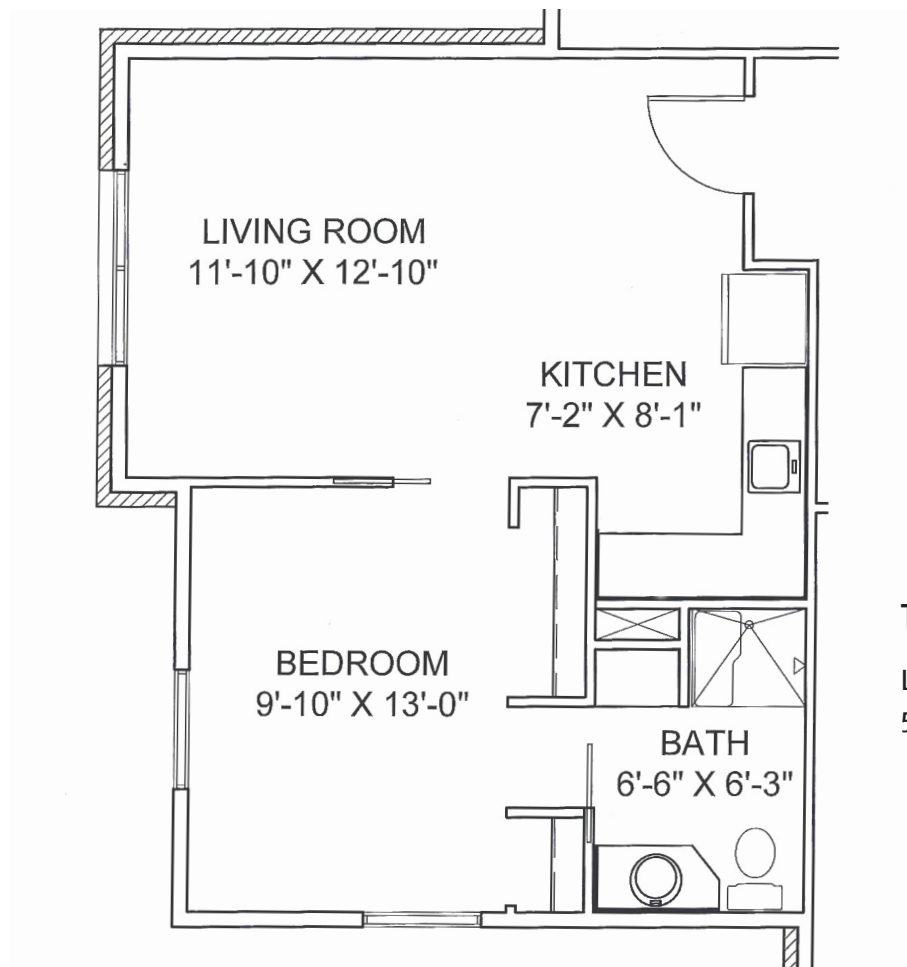
**The London**  
Medium One Bedroom  
461 sq. ft.



Please ask about availability. Features and amenities are subject to change.  
All square footage and dimensions are approximate.

## APARTMENT

### Floor Plans



### The Warren

Large One Bedroom  
545 sq. ft.

Please ask about availability. Features and amenities are subject to change.  
All square footage and dimensions are approximate.

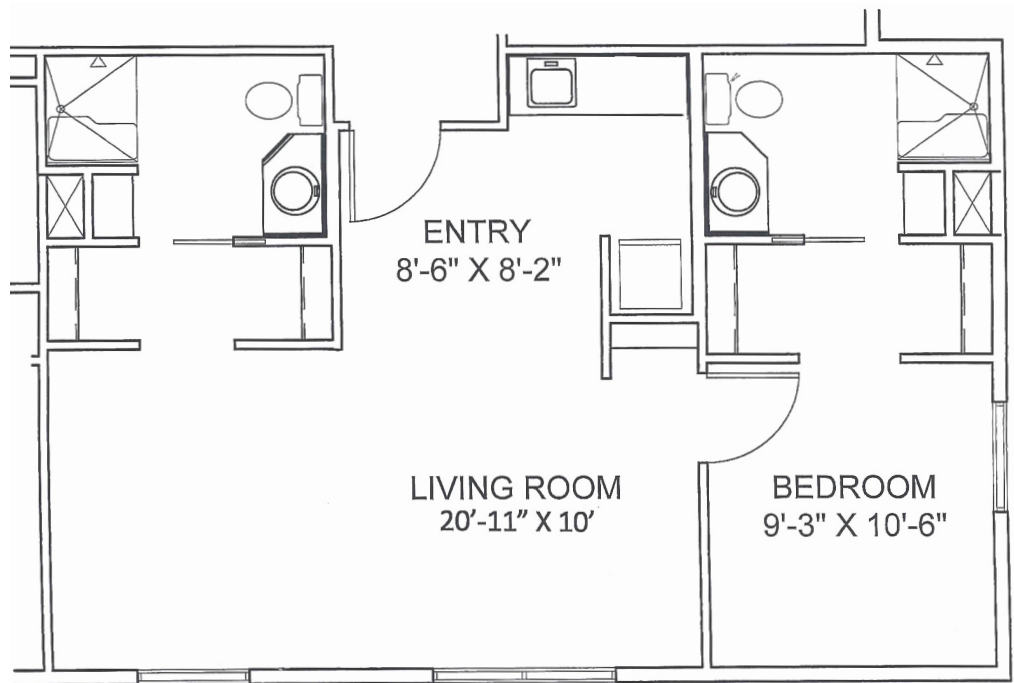
## APARTMENT

### Floor Plans

#### The Bruentrup

Large One Bedroom  
643 sq. ft.

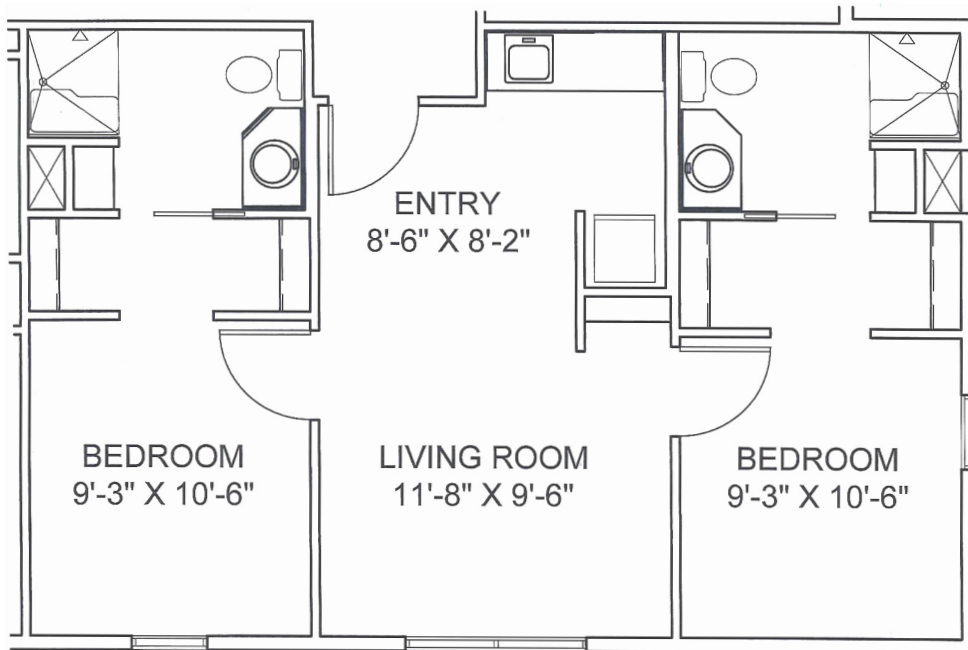
One Bedroom Deluxe  
750 sq. ft.



Please ask about availability. Features and amenities are subject to change.  
All square footage and dimensions are approximate.

## APARTMENT

### Floor Plans



### The Pepin

Two Bedroom  
643 sq. ft.

Please ask about availability. Features and amenities are subject to change.  
All square footage and dimensions are approximate.



## ASSISTED LIVING

### Care Services Guide

Your personalized plan of care begins with health assessments provided by a registered nurse. Together, you'll select assisted living support that suits your needs and personal preferences. An on-site registered nurse manages your individualized plan of care, and assures that you receive the care you expect and deserve right in the comfort of your own apartment.

---

#### Admission to Assisted Living (Care Services Setup)

Frequency: One-time service

Includes all assessments by a registered nurse, development of an individualized plan of care and evaluation for appropriateness of home care services.

---

#### Long-term Care Insurance Assistance

Frequency: Monthly

Assist with the coordination of required clinical documents for LTC insurance policies.

---

#### Nursing Visit (Skilled Nursing Services)

Frequency: Up to each 15-minute increment

May constitute assessment of changes in health status, vital signs, injections, wound care and diabetic monitoring. Skilled nursing visits may also include updates and communication with family, physician and pharmacies and evaluation and updating care plan.

---

#### Caregiver

Frequency: Up to each 15-minute increment

The Caregivers duties may include, assist with dressing/undressing, grooming (actual hands on assist or verbal direction), toileting, one person transfers, serving meals, answering a non-emergency call light, promoting good personal hygiene and safe environment. One and two hour safety checks for only one client in building at a time on a case by case basis. The Caregivers also carry out the activity- focused program in the memory care unit under the guidance of the Program Coordinator. All duties are performed under the direction of the Skilled Nurse.

---



# ASSISTED LIVING

## Personal Care

### Wellness Fee

Frequency: Monthly

Assisted Living Staff in the building twenty-four (24) hours per day. Registered Nurse is available by telephone twenty-four (24) hours per day. Registered Nurse will maintain updated service plans on all residents. Registered Nurse will coordinate and supervise Assisted Living Staff to promote quality care. Registered Nurse visit at least every ninety (90) days to assess appropriateness of care and services provided by the health care staff. Monthly blood pressures and weights are included. An opportunity to sit down as a group to discuss health issues and concerns with the nurse, including scheduled wellness topics of your interest. Caregiver response to your personal pendant calls for health-related emergencies such as falls, excessive bleeding, seizures, chest pain and nurse follow-up to this emergency (if additional care results from the emergency, services will be charged at the designated incremental rate). One half hour a week of individualized housekeeping services. Wellness Fee is not prorated for hospital stays or leaves of absence.

---

### Medication Setup

*(excludes insulin)*

Licensed nurse orders medication, communicates with physician, pharmacy and family, and monitors response to medications.

Frequency: Weekly setup using our pharmacy

Frequency: Weekly setup using a different pharmacy

*\*Each additional medication change requiring a new set-up will be charged per occurrence*

---

### Medication Administration

Caregivers may also assist with medications given by mouth or eye drops, ear drops or other routes of administration which have been taught by a registered nurse. All caregiver duties are performed under the direction of a skilled nurse.

Level 1 - Monthly

*Up to two administrations daily*

Level 2 - Monthly

*Three or more administrations daily*

PRN Med Administration per administration

*Unscheduled medication administration.*

---



## ASSISTED LIVING

### Care Services Guide

#### Insulin Package

Insulin Once per Day                      Monthly Package

Insulin Twice or more per day      Monthly Package

---

#### INR/Anticoagulant Package

Frequency: Monthly

One time per month the nurse will: coordinate with the lab, communication with physician, order processing and medication change as needed (for Resident's receiving medication set up/management only). If more times per month are required, they will be charged at the skilled nursing rate listed above.

---

#### Special Dietary Monitoring

Frequency: Monthly

This service includes thickened liquids, modified texture diets, coordination by a licensed nurse and monitoring of Resident by a Caregiver for up to three meals plus two snacks a day. Additional services will be charged at the ala carte amounts. This service is available on a case by case basis.

---

#### Bath/Shower Assistance

Bath or shower (up to 45 minutes)

Shower/bathing assistance by Skilled Nurse/ Caregiver includes nail care as needed and requested except for diabetic residents

---

#### Unlimited Escort Package

Frequency: Monthly

Unlimited escort by a caregiver throughout The Homestead at Maplewood, to and from meals, to activities and programs, etc.

---

## ASSISTED LIVING

### Personal Care

#### Introductory Escort Package

Two-week maximum

Unlimited escorts to provide orientation to The Homestead community and residents by staff

---

#### Additional Accu Checks

Up to each 15-minute increment

---

#### Lab Coordination

Up to each 15-minute increment

Lab coordination will be charged at an incremental skilled nursing rate.

---

#### Additional Services

|                       |                                     |                                     |
|-----------------------|-------------------------------------|-------------------------------------|
| 3-Meals Daily         | Pendant Replacement                 | Internal Apartment Transfer Service |
| Meal Delivery         | Non-Emergency Call Response         | Key Replacement                     |
| Guest/Individual Meal | Phone                               | Additional Key Deposit              |
| Guest Lodging         | Carpet Cleaning (portion-whole apt) | Laundry Assistance                  |
| Property Removal      | Maintenance Services                | Additional Housekeeping Services    |
|                       |                                     | New Medication Set-up               |

---

Residents must give The Homestead at Maplewood 24-hour advance notice of cancellation of scheduled service or the resident will be charged for the service. Client or responsible party must provide all medical and personal supplies.

*The Homestead at Maplewood is licensed by the Minnesota Department of Health as an Assisted Living with Dementia Care Provider.*



For more information about  
The Homestead at Maplewood or to schedule  
a welcome tour, please call 651.770.3959 or  
visit [homesteadatmaplewood.org](http://homesteadatmaplewood.org).

## Maplewood Senior Living A Senior Living and Care Community

### Living and Care Choices

- Assisted Living
- Memory Support
- Respite Care
- Short-term Rehabilitation and Long-term Care (Maplewood Care Center)

## Community Attractions

- Beauty and Barber Salon
- Bistro
- Chapel
- Complimentary Wi-Fi
- Continuum-of-Care Campus
- Craft Room
- Fitness Center
- Gazebo
- Maud's Mini Mart
- Rehabilitation Clinic
- Walking Path
- Waterfall Garden

*For the health and safety of our residents and guests, smoking is only permitted in the gazebo. Pets are welcome. Guidelines apply.*

The Homestead at Maplewood  
A Senior Living and Care Community  
1890 Sherren Avenue E  
Maplewood, MN 55109  
651.770.3959  
[homesteadatmaplewood.org](http://homesteadatmaplewood.org)  
Maplewood Senior Living MN



*The Homestead at Maplewood is a part of the Volunteers of America National Services (VOANS) family of organizations. VOANS, a wholly-owned subsidiary of Volunteers of America Inc., provides affordable housing and healthcare services in over 40 states and Puerto Rico. As a national, nonprofit, faith-based organization, VOANS is dedicated to helping those in need live healthy, safe and productive lives.*

© 2023 Volunteers of America National Services. All Rights Reserved. We are designated tax-exempt under section 501(c)3 of the Internal Revenue Code.

THAMAPLEWOOD AL BRO 0323

