

Maplewood Senior Living

A Senior Living and Care Community



THE HOMESTEAD AT MAPLEWOOD

Memory Support and Specialty Care



NATIONAL
SERVICES



THE HOMESTEAD AT MAPLEWOOD

Memory Support and Specialty Care

The Homestead at Maplewood, on the campus of Maplewood Senior Living, features the perfect blend of residential memory support with customized health services and life enrichment programs. Within The Homestead at Maplewood's intimate memory support household, men and women with memory loss move throughout their days enjoying the freedom to be active and social in a warm, nurturing environment.

Specialty Care

At The Homestead at Maplewood, we provide "specialty care" for those residents who may not have advanced cognitive impairment, but are in the need of a two-person assist. Our specialty care residents would receive this additional assistance on the third-floor/memory support floor. We strive to make all residents feel comfortable and provide care to these residents by having them remain living on the first two assisted living floors for activities, meals, etc.

Special Features

- Bright, open floor plans
- Managed-access, private memory support apartments
- Thoughtfully designed bathrooms with walk-in shower and grab bars
- Kitchenette in each apartment
- Individually controlled heat and air conditioning unit
- Blinds on all windows
- Access to personal care 24 hours/day
- Bird Aviary
- Aquarium

Added Conveniences Available

- Daily snacks
- Emergency response system (on site staff response)
- Weekly light housekeeping services
- Laundry included (wash, dry, fold, and deliver)
- All utilities (excluding telephone and cable television)
- Complimentary Wi-Fi
- Planned life enrichment activities designed to meet the physical, social, emotional, intellectual, spiritual and occupational needs of our residents
- Scheduled transportation for outings
- Use of all community spaces
- Apartment and building maintenance
- Month-to-month contract
- Use of It's Never Too Late™ (iN2L) person-centered computer system
- Sensory Room for dementia care, allows individuals to safely explore and stimulate all five senses

Our professional, dedicated staff work side by side to celebrate individuality, support choice and encourage independence whenever possible. Family and friends are always welcome to spend time with their loved one and join them for meals, celebrations and special events.

THE HOMESTEAD AT MAPLEWOOD

Commitment to Care and Service

We continually strive to provide the best support and care services and to make our community one that enriches, encourages and fulfills our residents' daily lives.

Our compassionate, professional staff provide person-centered care to individuals with cognitive loss in a welcoming, homelike setting. At The Homestead at Maplewood, staff receives periodic up-to-date training to best serve our residents on a daily basis.

Family members are welcome anytime, and are included in making the transition to our community seamless. There are ongoing opportunities for family and friends to stay involved in the resident's day-to-day living.

Apartment Style Square Footage

The Vincent - Studio	393
The Bell - Studio	400
The Casey - Studio	400
The Carver - Studio	472
The London - 1 Bedroom	461
The Warren - 1 Bedroom	545
The Pepin - 2 Bedrooms	645

Additional Fees

Care Services Set Up Fee: one time assessment fee due at move in

Reservation Fee: holds unit for 30 days

Security Deposit: damage deposit for the unit

Second Occupant Fee: monthly fee for second occupant

Pet Deposit (Non-refundable): one time charge for your pet

Additional Services

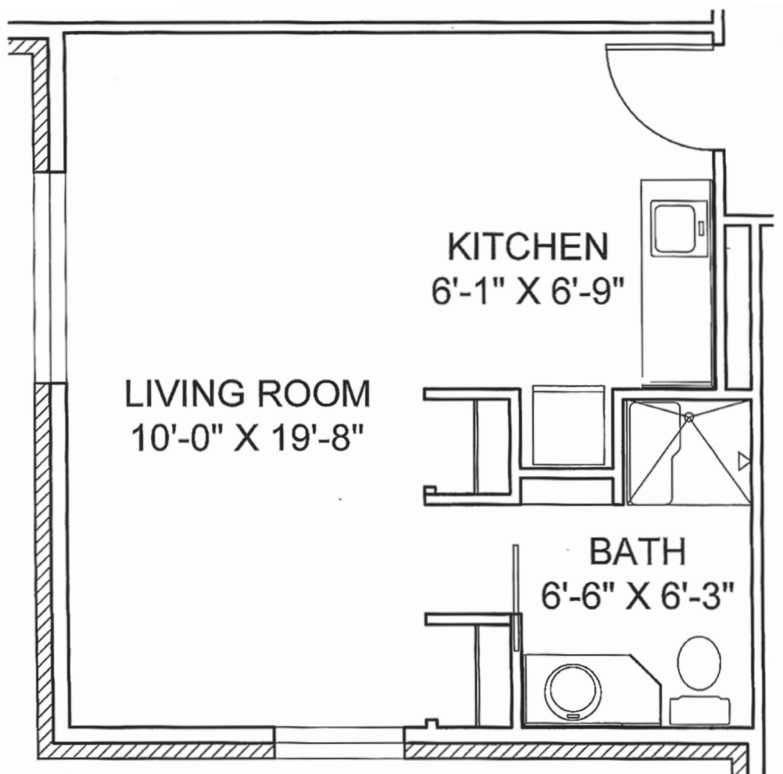
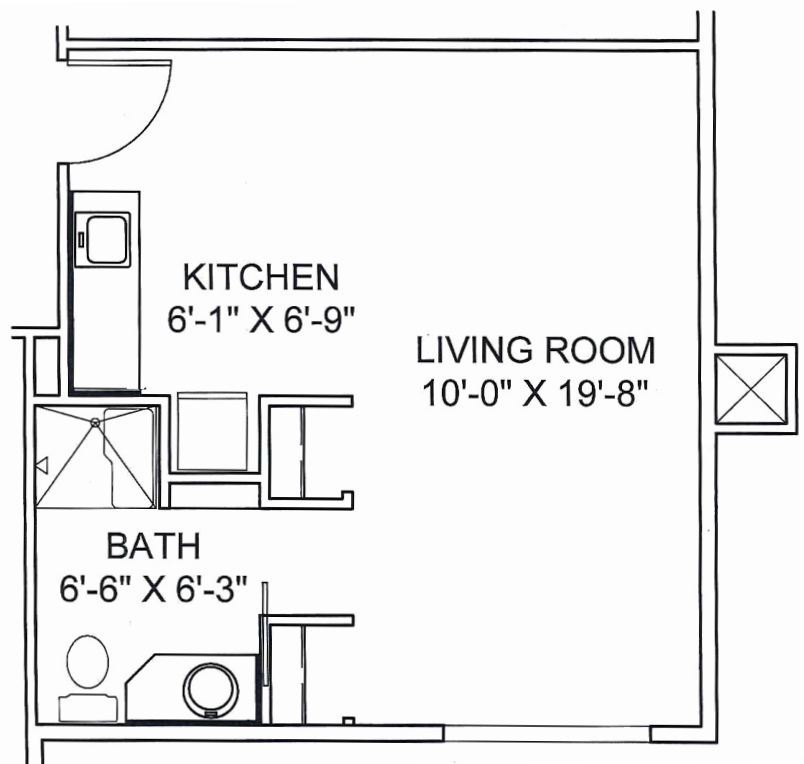
- 3-Meals Daily
- Meal Delivery
- Individual/Guest Meal
- Guest Lodging
- Pendant Replacement
- Additional Key Deposit
- Caregiver Visit
- Nurse Visit
- Phone
- Maintenance Services
- Additional Housekeeping
- Additional Accu Checks
- Internal Apartment Transfer
- Property Removal
- Key Replacement
- Long Term Care Insurance
Coordination Assistance

APARTMENT

Floor Plans

The Vincent

Studio
393 sq. ft.



The Bell

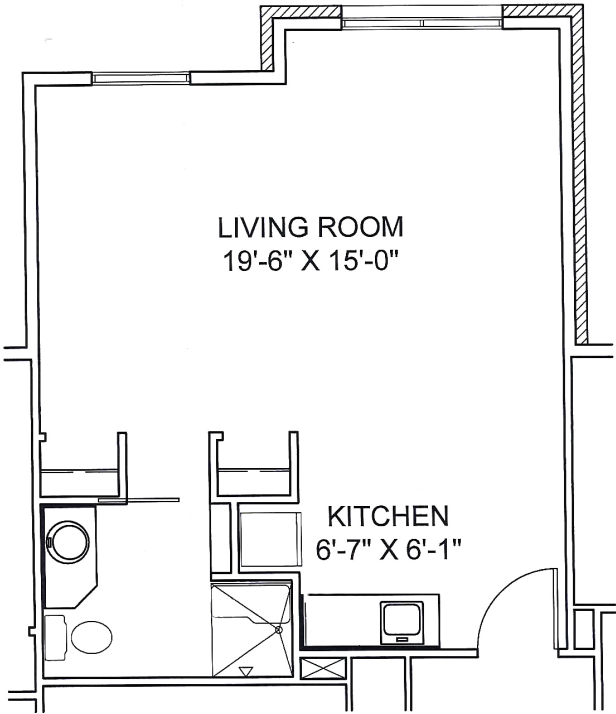
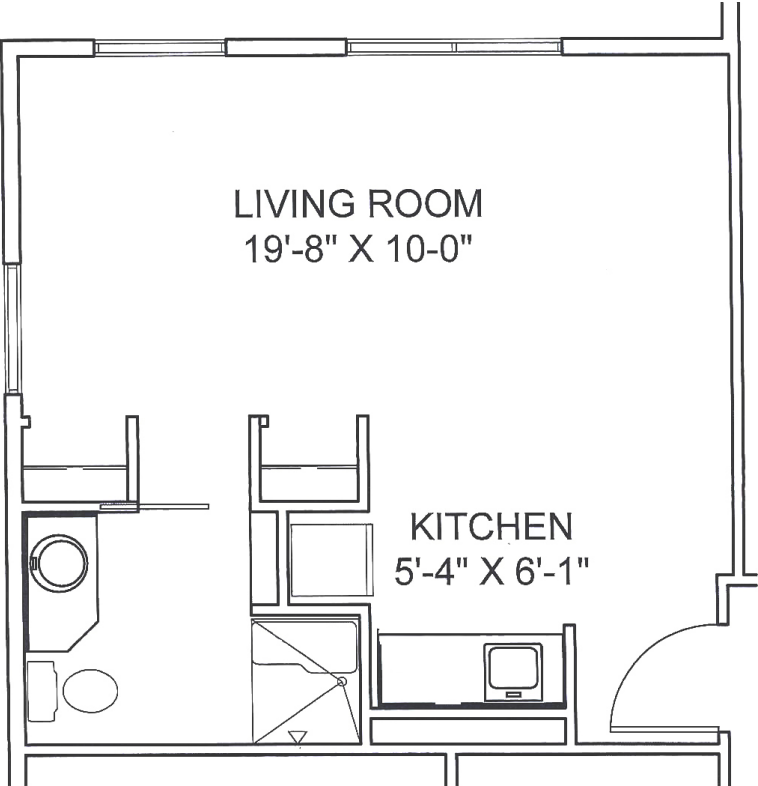
Studio
400 sq. ft.

Please ask about availability. Features and amenities are subject to change. All square footage and dimensions are approximate.

APARTMENT
Floor Plans

The Casey

Studio with extra window
400 sq. ft.



The Carver

Studio
472 sq. ft.

Please ask about availability. Features and amenities are subject to change. All square footage and dimensions are approximate.



MEMORY SUPPORT AND SPECIALTY CARE

Care Services Guide

Personalized memory support begins with a health care assessment provided by a registered nurse, who collaborates with each resident's physician to develop individualized plans for health care and personal care services. An on-site registered nurse provides coordination for plans of care.

Admission to Assisted Living (Care Services Setup)

Includes all assessments by a registered nurse, including admission assessments, development of an individualized plan of care and evaluation for appropriateness of home care programs.

Basic Service Package

This daily service package includes Registered Nurse oversight and medication set-up. Caregivers provide personal cares in the morning and at bedtime, medication administration up to two times per day, laundry and activity programming. Needs direction and/or verbal cueing to actual hands-on assist with personal care, i.e., dressing and grooming. Does not present any persistent inappropriate behavior patterns such as: hitting, yelling or kicking, disruptive social interaction in-group settings, i.e., dining room, living room or during enrichment programs. Independent with ambulation with or without devices. Continent with bowel and bladder, or able to manage incontinence independently.

Enhanced Service Package

This daily service package includes Registered Nurse oversight and medication set-up. Caregivers provide personal cares in the morning and at bedtime, medication administration for three or more times per day, laundry and activity programming. Needs verbal cueing to eat at meal times. Bowel and/or bladder incontinence managed by staff with routine toileting. Transfers, ambulation with maximum assists of one Caregiver. Inappropriate behaviors can be managed with verbal redirection and/or professional interventions along with medications as needed, i.e. nurse/medications/psychologist. Willing and able to participate in most activities of daily living with redirection. Licensed nursing interventions at least weekly, but not daily, i.e. B12 injections, Accuchecks, nebulizer treatments, and filling of syringes.

Advanced Service Package

This package includes all of the care and services included in the Enhanced Service Package plus one of the following additions: transfers with two (2) staff or the use of a mechanical lift; ambulation programs with two (2) staff; licensed nursing interventions daily beyond administration of oral and topical medications, i.e., Accuchecks, injections of any kind, and wound care; total assist at meals to eat; requires daily interventions and multiple medication changes due to behaviors which are not manageable without psychologist and medication management.

MEMORY SUPPORT AND SPECIALTY CARE

Care Services Guide

Specialty Care Package

This package includes all of the care and services included in the Advanced Service Package plus one or more of the following services:

- Unstable medical condition requiring frequent nurse intervention of greater than two (2) changes to the plan of care in a week.
- May be recovering from a hospital or nursing home stay
- Special dietary monitoring including thickened liquids, modified texture diets and monitoring of resident by a Caregiver at all meals.
- Complex monitoring and coordination of hospice care.
- Pain pump management
- Hourly and two-hour safety checks for only one client in the building at a time on a case by case basis.

Additional Accu Checks

Long-term Care (LTC) Insurance Assistance

Assist with the coordination of required clinical documents for LTC insurance policies.

Residents must give The Homestead at Maplewood 24-hour advance notice of cancellation of scheduled service or the resident will be charged for the service. **Client or responsible party must provide all medical and personal supplies.**

The Homestead at Maplewood is licensed by the Minnesota Department of Health as an Assisted Living with Dementia Care Provider.



**For more information about
The Homestead at Maplewood or to
schedule a welcome tour, please call
651.770.3959 or visit
homesteadatmaplewood.org.**

Maplewood Senior Living A Senior Living and Care Community

Living and Care Choices

- Assisted Living
- Memory Support
- Respite Care
- Short-term Rehabilitation and Long-term Care (Maplewood Care Center)

Community Attractions

- Beauty and Barber Salon
- Bistro
- Chapel
- Craft Room
- Complimentary Wi-Fi
- Continuum-of-care campus
- Fitness Center
- Game Room
- Gazebo
- Lounge
- Maud's Mini Mart
- Rehabilitation clinic
- Waterfall garden
- Walking path

For the health and safety of our residents and guests, smoking is only permitted in the gazebo. Pets are welcome. Guidelines apply.

**The Homestead at Maplewood
A Senior Living and Care Community**
1890 Sherren Avenue E
Maplewood, MN 55109
651.770.3959
homesteadatmaplewood.org
 - Maplewood Senior Living MN



The Homestead at Maplewood is a part of the Volunteers of America National Services (VOANS) family of organizations. VOANS, a wholly-owned subsidiary of Volunteers of America Inc., provides affordable housing and healthcare services in over 40 states and Puerto Rico. As a national, nonprofit, faith-based organization, VOANS is dedicated to helping those in need live healthy, safe and productive lives.

© 2023 Volunteers of America National Services. All Rights Reserved. We are designated tax-exempt under section 501(c)3 of the Internal Revenue Code.

THAMaplewood MS Broch 0423

