

# The Homestead at Anoka

A Senior Living and Care Community



## ASSISTED LIVING



**NATIONAL  
SERVICES**

# THE HOMESTEAD AT ANOKA

## Assisted Living

At The Homestead at Anoka, a variety of well-appointed studio, one- and two-bedroom assisted living apartments are designed to accommodate whatever your day may bring. Whether you're entertaining friends or enjoying a quiet afternoon, your home is ideal for any occasion.

### Special Features

- Bright, open floor plans emphasize spacious rooms with 9-foot ceilings
- Quality construction, including Pella windows
- Fully equipped kitchens in two-bedroom apartments and select one bedrooms
- Maple cabinetry and millwork
- Convenient in-home washers and dryers in many apartment homes
- Individually controlled heat and air conditioning
- Blinds on all windows
- Balconies on many floor plans
- Gas fireplaces in two-bedroom floor plan

### Added Conveniences

(Included in monthly rate)

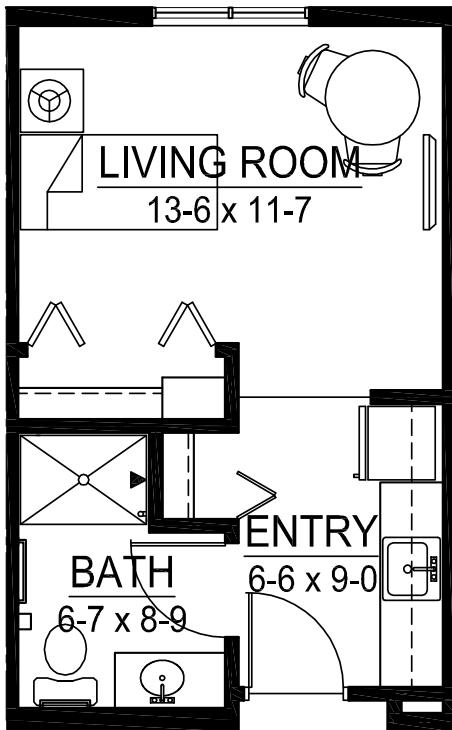
- Daily snacks
- Flexible dining options available daily
- Only 3 meal plan available for studios
- Weekly light housekeeping services
- All utilities (heat, electric, central air, water and trash)
- Complimentary wireless Internet
- Life enrichment and educational programs
- Scheduled transportation for shopping and outings
- Personal pendant urgent call system
- 24-hour staffing
- Lawn care and snow removal
- Apartment building maintenance
- Priority access to Anoka Rehabilitation and Living Center
- Use of all campus community spaces
- *It's Never 2 Late*<sup>®</sup> sensory program
- Professional management by The Homestead at Anoka
- Month-to-month residency agreement

*Pets are welcome. Guidelines apply.*

Apartment Style	Square Footage
Studio	323-406
1 BR	545-782
1 BR/Deck	696-809
2 BR/Deck	1,230-1,278

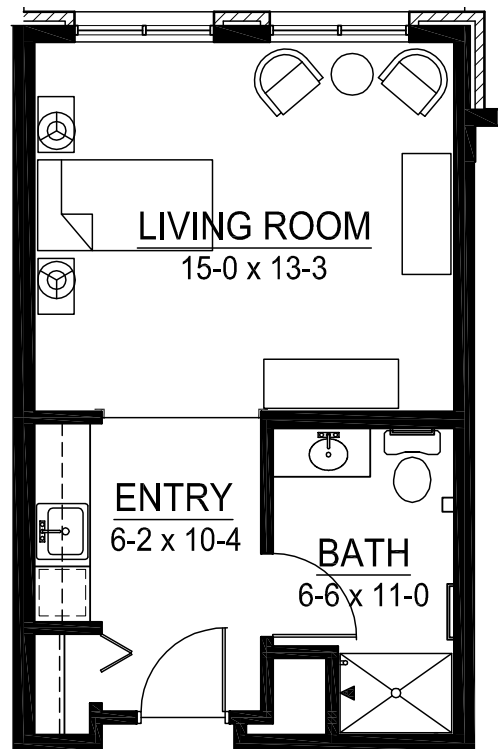
# APARTMENT

## Floor Plans



**The Island**

Studio  
323 sq. ft.

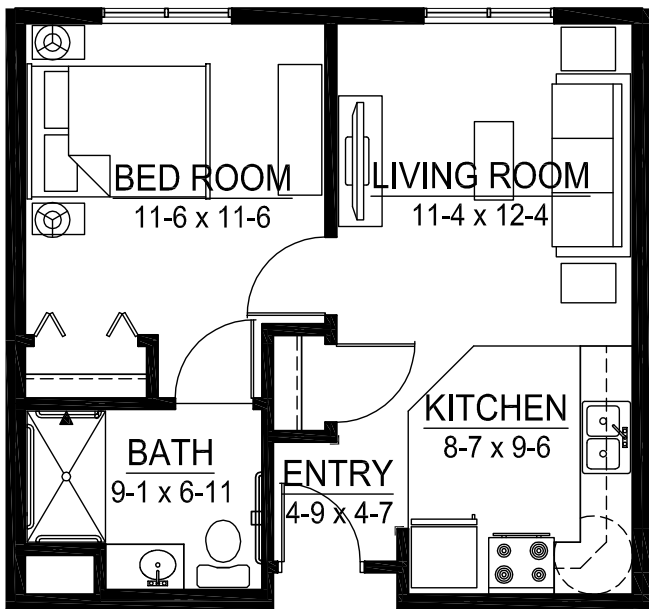


**The Cove**

Studio  
406 sq. ft.

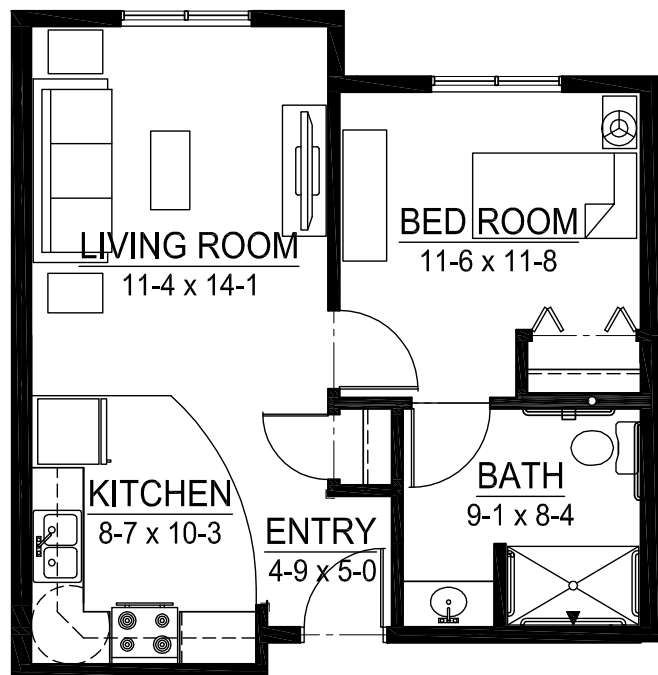
# APARTMENT

## Floor Plans



### The Waters

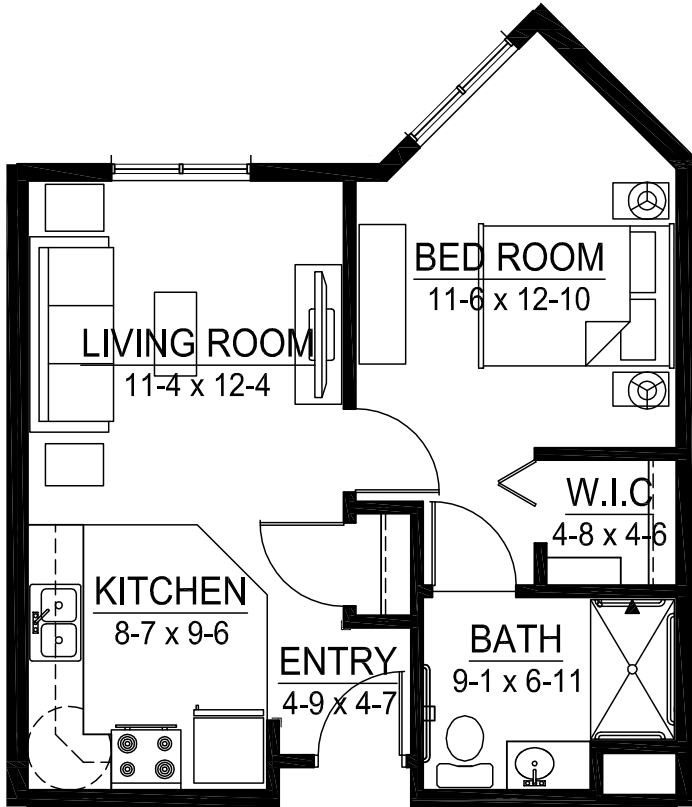
1 bedroom  
545 sq. ft.



### The Delta

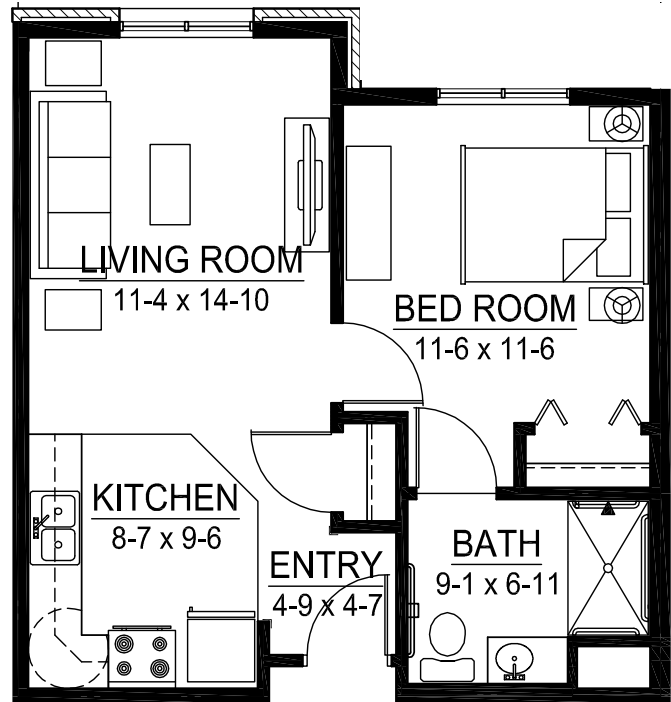
1 bedroom  
562 sq. ft.

# APARTMENT Floor Plans



**The Rapids**

1 bedroom  
575 sq. ft.



**The Shores**

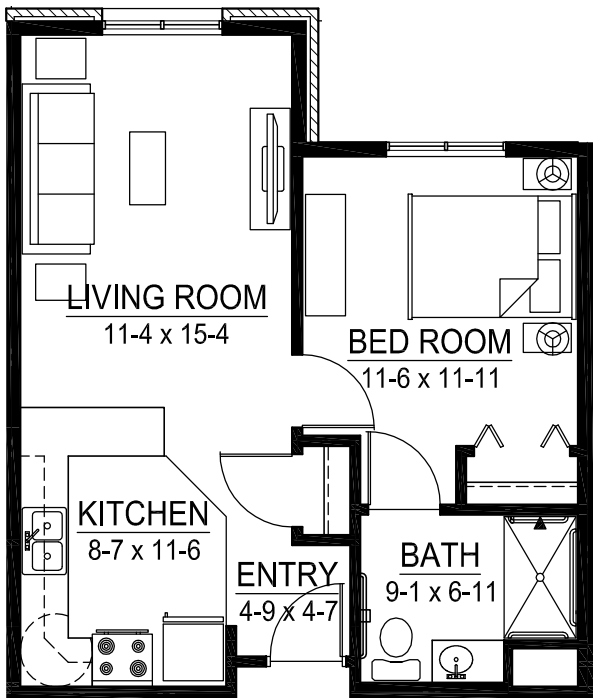
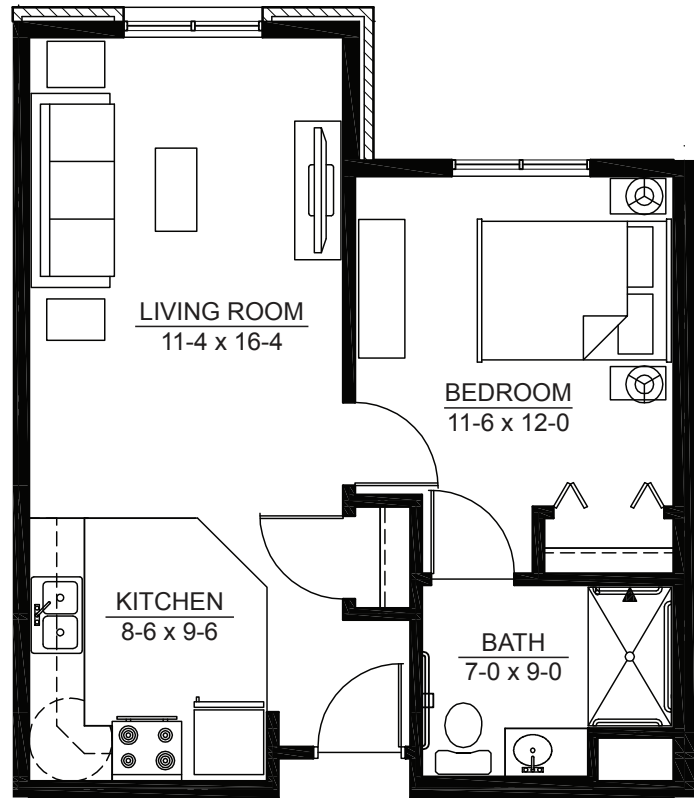
1 bedroom  
576 sq. ft.

# APARTMENT

## Floor Plans

### The Peninsula

1 bedroom  
594 sq. ft.

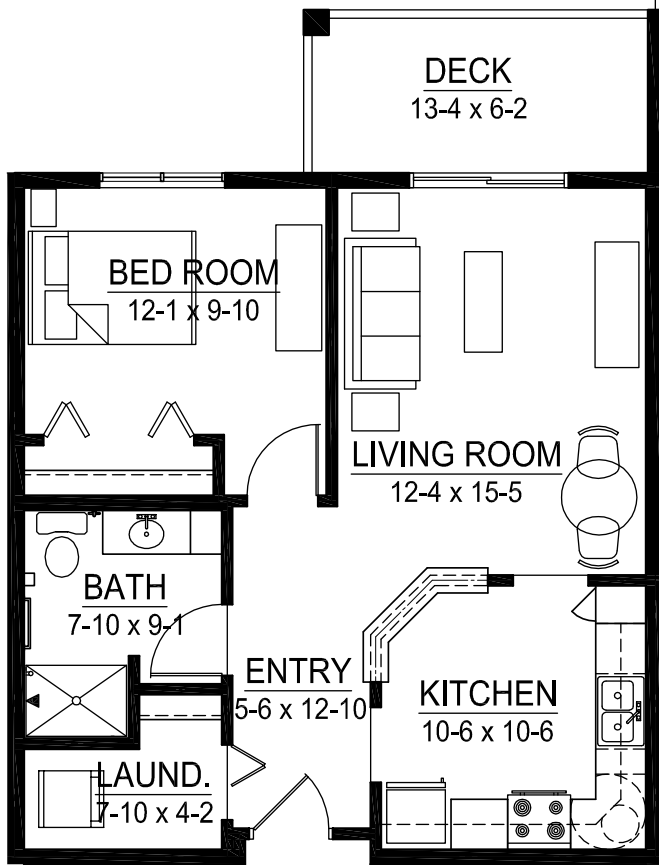


### The Marina

1 bedroom

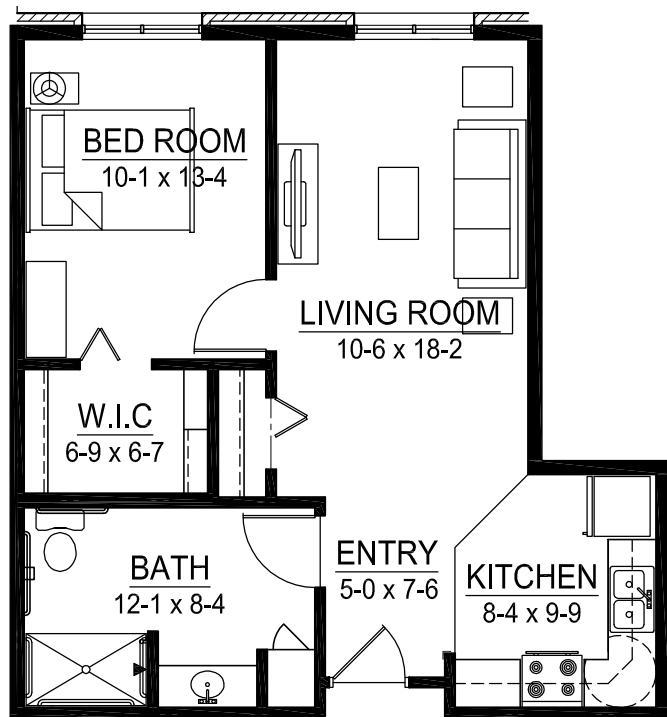
607 sq. ft.

# APARTMENT Floor Plans



**The Point**

1 bedroom  
696 sq. ft.

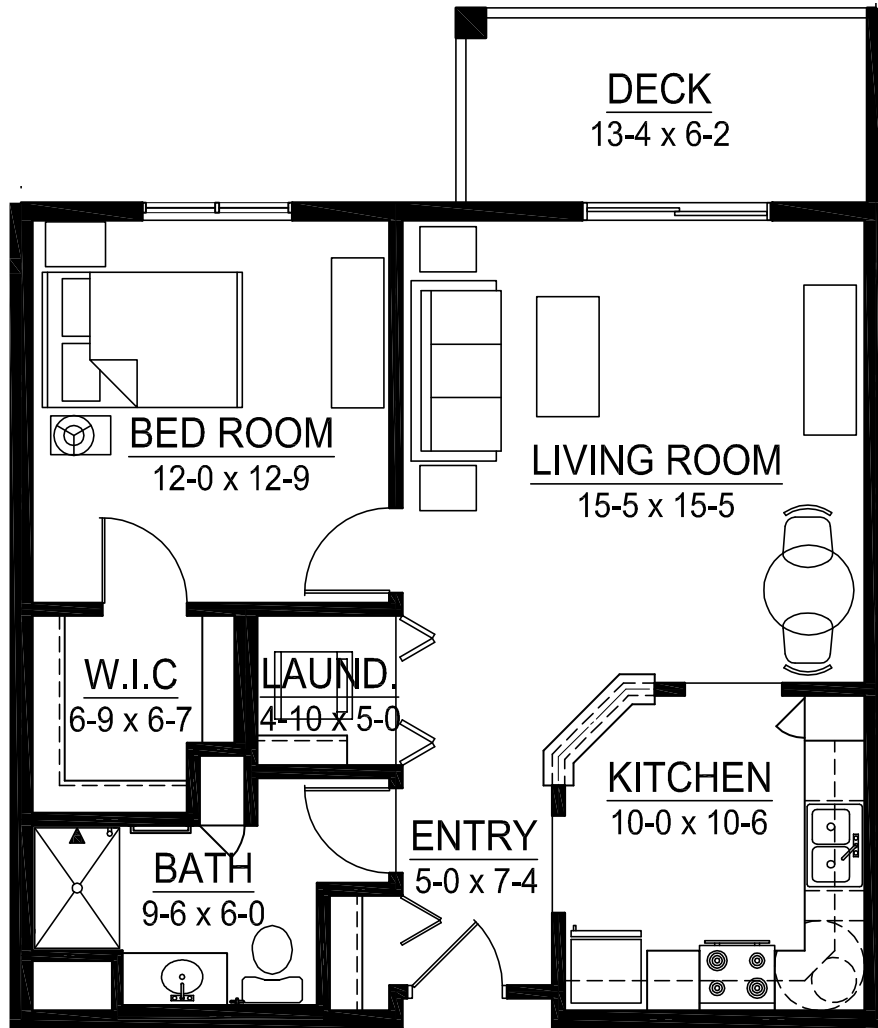


**The Bluffs**

1 bedroom  
677 sq. ft.

# APARTMENT

Floor Plans



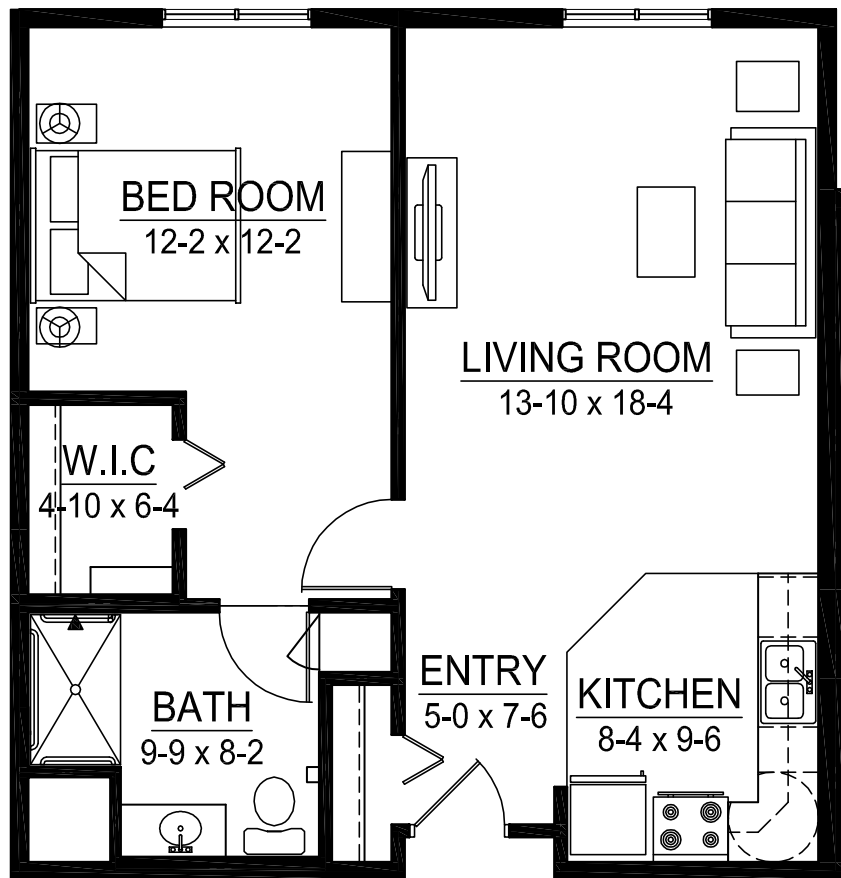
## The Dunes

1 bedroom  
779 sq. ft.



# APARTMENT

Floor Plans

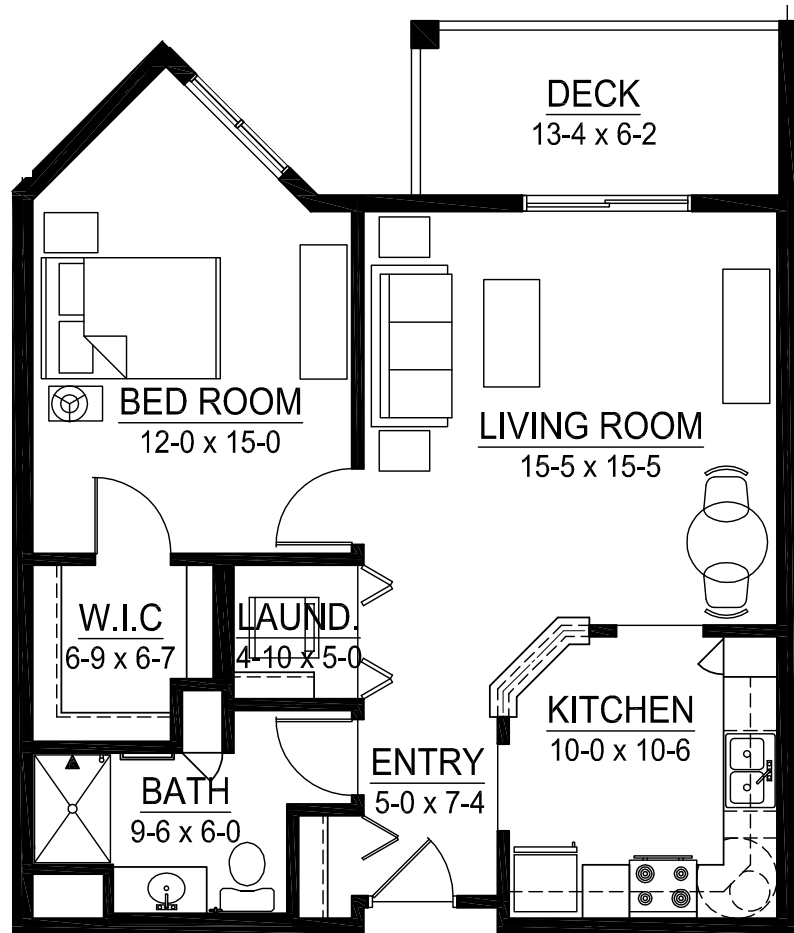


## The Current

1 bedroom  
782 sq. ft.

# APARTMENT

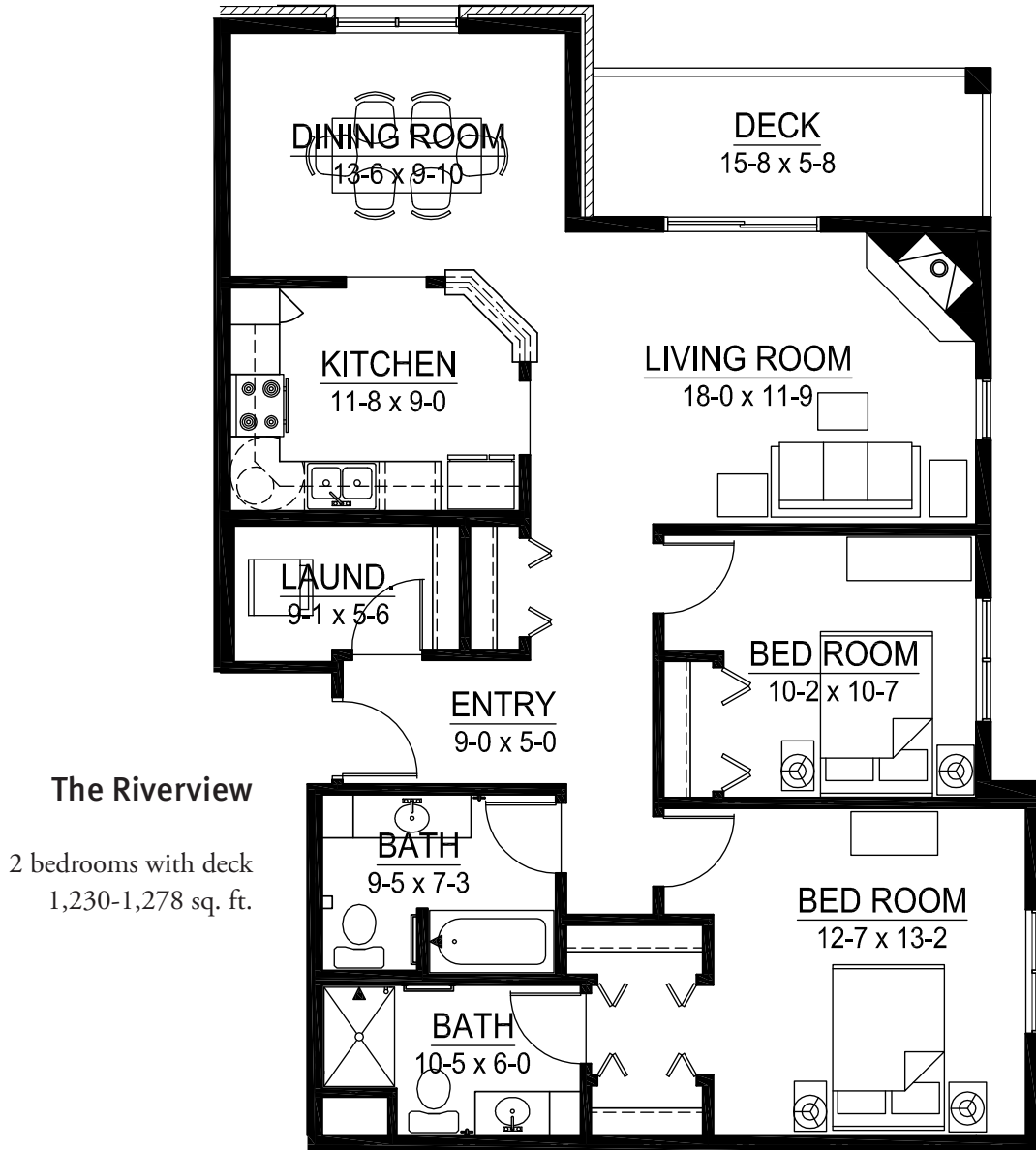
Floor Plans



## The Marsh

1 bedroom with deck  
809 sq. ft.

# APARTMENT Floor Plans



Floor plans shown depict a sampling of styles; stated dimensions and square footage are approximate.  
Please ask about availability. Features and amenities subject to change.



## ASSISTED LIVING

### Personal Care

Your personalized plan of care begins with health assessments provided by a registered nurse. Together, you'll select assisted living support that suits your needs and personal preferences. An on-site registered nurse manages your individualized plan of care, and assures your in-home assisted living needs are accommodated when and how you'd like.

---

### Admission to Assisted Living Services

One-time fee

Includes all assessments by a registered nurse, including admission assessments, development of an individualized plan of care and evaluation for appropriateness of home care programs.

---

### Wellness Program

Monthly

- Trained caregiver on site 24-hours/day
  - Registered nurse available on site or by telephone 24-hours/day
  - Registered nurse maintains updated plans of care, and coordinates and supervises caregiver staff to promote quality of care
  - Registered nurse visits at least every 90 days to assess appropriateness of care and services provided
  - by health care staff
  - Daily visual safety check
  - Monthly blood pressure and weight monitoring
  - Caregiver response to personal pendant calls for health-related emergencies such as falls, excessive bleeding, seizures and chest pain. Includes nurse follow-up. If continued care results, services will be charged at the designated incremental rate.
- 

### Nursing Visit

Injections, wound care, diabetic monitoring, foot care, laboratory orders and X-rays, pacemaker checks, etc.

---

### Caregiver Visit

Assistance with daily activities such as dressing, bathing, using the bathroom, walking and transfer, escorts and reassurance checks. Caregivers also may perform medication reminders, light meal prep and bed making.

---

## ASSISTED LIVING

### Personal Care

### Medication Set-Up

Licensed nurse orders medication, communicates with physician, pharmacy and family, and monitors response to medications.

- Medication set-up, Homestead's consulting pharmacy (1-8 medications)
- Medication set-up, Homestead's consulting pharmacy (9+ medications)
- Order from pharmacy other than Homestead's consulting pharmacy, additional fee
- Mail-order medication, additional fee
- Set-up insulin/syringe
- Medication change requiring a new set-up

---

### Additional Services

3 Meals Daily	Key (additional)	Telephone Transfer Fee (apt to apt)
2 Meals Daily	Key FOB (replacement)	Telephone (add'l line installation)
1 Meal Daily	Key Replacement/Lock Change	Maintenance (30-minute min)
Guest/Individual Meal	Emergency Pendant (add/replace)	Guest Lodging
Meal Delivery	Garage	Additional Housekeeping
Apartment Transfer	Garage Door Opener (add/replace)	Storage
Key FOB (additional)	Telephone	Storage Lock (replacement)

---

### INR/Coumadin Management

Monthly

Lab coordination, communication with physician, order processing and medication change as needed for those on medication set up/management only. (More than once per month is charged at skilled nursing rate.)

---



## **ASSISTED LIVING**

### **Personal Care**

#### **Medication Administration**

Per Visit

Caregivers may also assist with medications given by mouth or eye drops, ear drops or other routes of administration which have been taught by a registered nurse. All caregiver duties are performed under the direction of a licensed nurse.

---

#### **Shower Assistance**

Per Shower

Shower assistance by a caregiver includes basic nail and foot care with exception of residents with diabetes.

---

#### **Whirlpool Bath/Spa**

Monthly

Bathing assistance by a caregiver to/from Spa room includes basic nail and foot care with the exception of residents with diabetes.

---

#### **Housekeeping**

15 minutes

Light services including dusting around items, vacuuming, cleaning the bathroom and kitchen, sweeping, mopping and taking out the trash.

No heavy lifting.

---

#### **Unlimited Escort Package**

Monthly

Unlimited escort by a caregiver throughout The Homestead, to and from meals, to activities and programs, etc.

---

## ASSISTED LIVING

### Personal Care

### Introductory Escort Package

Up to two weeks

- Unlimited escorts to provide orientation to The Homestead at Anoka community
  - Comprehensive, ongoing evaluation for the first two (2) weeks of residence for care needs, compliance with medication regimen, introduction to Homestead residents and staff and orientation to apartment.
- 

### LTC Insurance Assistance

Monthly

Assist with the coordination of required clinical documents for Long Term Care insurance policies.

---

### Laundry Assistance

Per two (2) loads

Private items and/or linens are laundered, folded and put away. Additional loads are \$15.00 per load.

*All services are private pay.*

*Wellness fee is not prorated for hospital stays or leaves of absence.*

*Medication charges will only be prorated month of move-in.*

*The Homestead at Anoka is licensed by the Minnesota Department of Health.*



For more information about The Homestead at Anoka or to schedule a tour, please call 763.528.6500 or visit [homesteadatanoka.org](http://homesteadatanoka.org).

## The Homestead at Anoka— A Senior Living and Care Community

The Homestead at Anoka is a community filled with possibilities. Set amid the trails of the Rum River in historic Anoka, you'll find small town ease and sensibility, combined with the convenience and inspiration of a thriving, vibrant neighborhood.

At The Homestead, you can take comfort in knowing your needs can be met today and tomorrow, through an array of thoughtfully planned living choices and amenities.

### Living and Care Choices

- Spacious, well-appointed independent living apartments
- Thoughtfully designed assisted living apartments
- Private, nurturing memory support residences
- State-of-the-art care center offering short-term rehabilitation; long-term care; cardiac care; and specialized memory support


### Community Attractions

- Meditation chapel
- Rehabilitation clinic
- Fitness center
- Garden area
- Bistro
- General store
- Club lounge
- Walking trail
- Community room
- Complimentary Wi-Fi
- Restaurant-style dining
- Private dining room
- Beauty and barber salon
- Guest suite
- Outdoor courtyard

*The Homestead at Anoka is a smoke-free community.*

The Homestead at Anoka  
3002 4th Avenue, Anoka, MN 55303

763.528.6500  
[homesteadatanoka.org](http://homesteadatanoka.org)

 Follow us on Facebook



The Homestead at Anoka is a part of Volunteers of America National Services (VOANS). VOANS is a wholly-owned subsidiary of Volunteers of America, Inc. - a national, nonprofit, faith-based organization. © 2022 Volunteers of America National Services. All Rights Reserved. We are designated tax-exempt under section 501(c)3 of the Internal Revenue Code.

THAA IL Broch o623

