

The Homestead at Anoka
A Senior Living and Care Community



MEMORY SUPPORT





THE HOMESTEAD AT ANOKA

Memory Support

Making sure your loved one receives excellent care is your top priority. It's ours, too. Within The Homestead at Anoka's intimate memory support household, individuals with memory loss move throughout their days enjoying the freedom to be active and social while receiving person-centered care and supervision in a welcoming, appealing place to call home.

The Homestead at Anoka features the perfect blend of residential memory support with customized health services and life enrichment programs. Our compassionate, professionally trained staff takes pride in enriching the lives of our residents by celebrating individuality, supporting choice and encouraging independence whenever possible.

You can sum up our philosophy simply: we care for those we serve like we'd care for members of our own family.

Special Features

- Comfortable residences with managed access
- Private suites
- Thoughtfully designed bathrooms with walk-in shower and grab bars
- Secure outdoor courtyard
- Specially trained staff
- Licensed nursing

Added Conveniences

(Included in monthly rate)

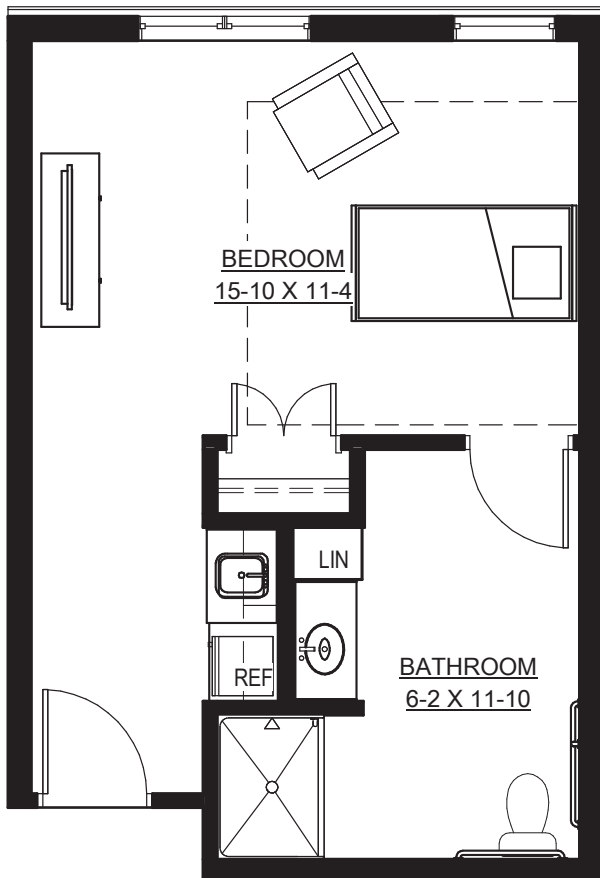
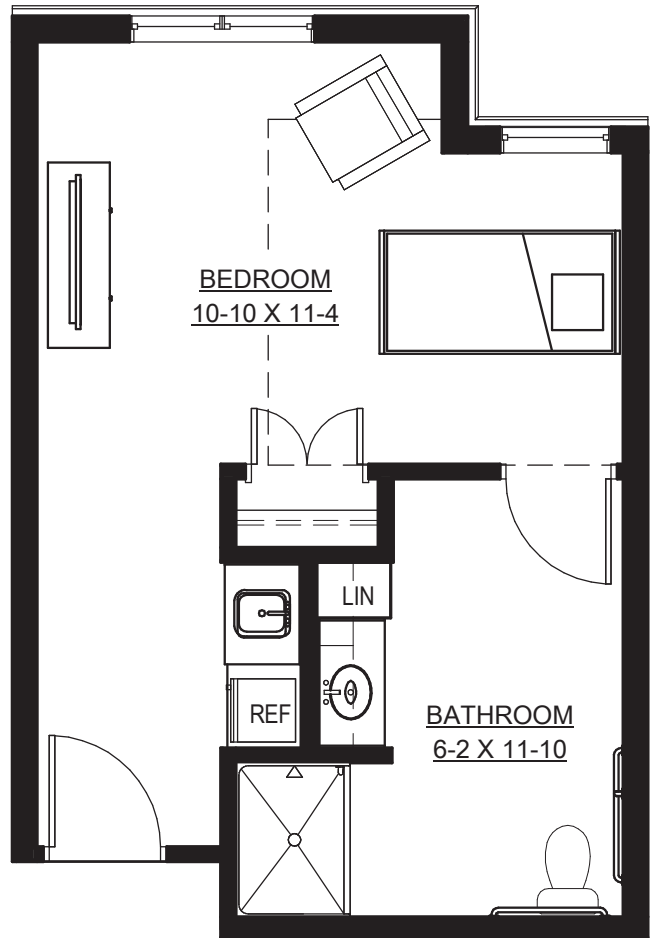
- Daily snacks
- Emergency response system (on site staff response)
- Weekly light housekeeping
- Weekly personal laundry (two loads)
- Complimentary wireless Internet
- All utilities (heat, electric, central air, water and trash)
- Music therapy and *It's Never Too Late*[®] sensory program
- Planned life enrichment activities and programs based upon individual interests
- Priority access to other Homestead at Anoka living and care options based on availability
- Professional management by Homestead at Anoka
- Month-to-month contract

APARTMENT

Floor Plans

Franklin

Studio
380 sq. ft.

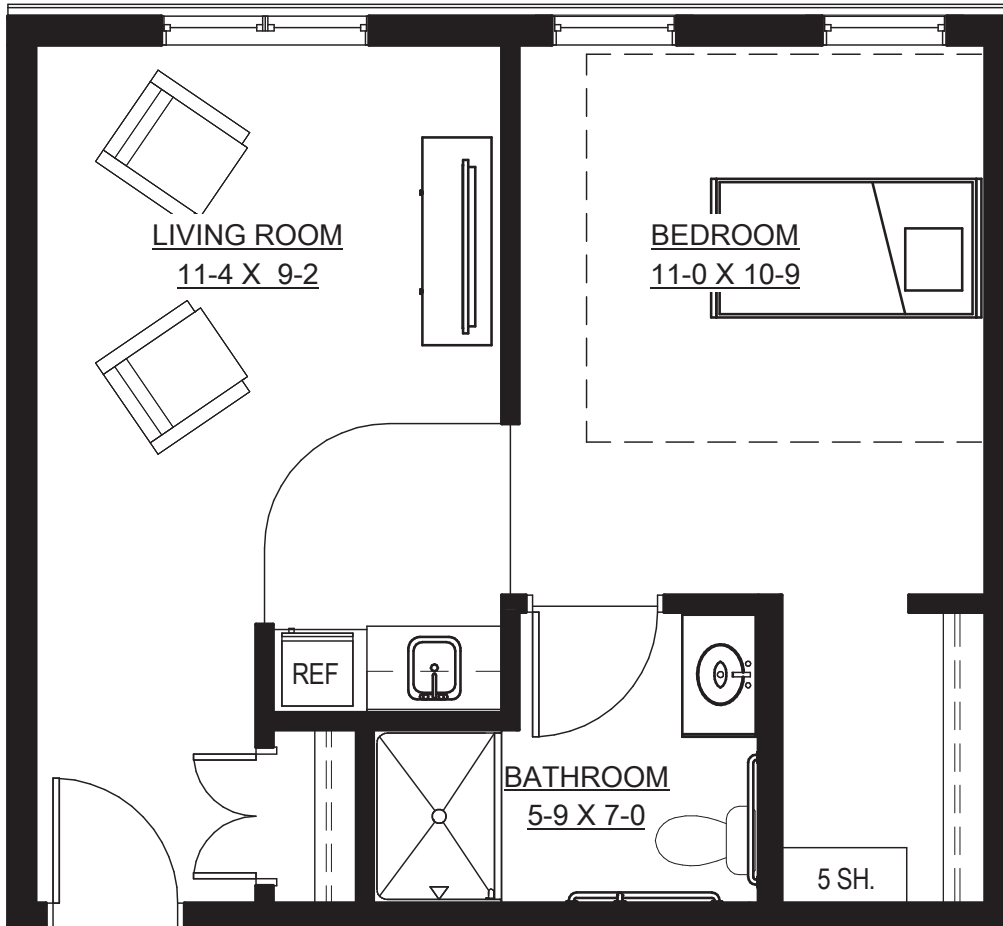


Anoka

Studio
396 sq. ft.

APARTMENT

Floor Plans



Aldrich

1 Bedroom
514 sq. ft.

Floor plans shown depict a sampling of styles; stated dimensions and square footage are approximate.
Please ask about availability. Features and amenities are subject to change.

MEMORY SUPPORT

Personal Care

Personalized memory support begins with a health care assessment provided by a registered nurse, who collaborates with each resident's physician to develop individualized plans for health care and personal care services. An on-site registered nurse provides coordination for plans of care.

Care Service Set-up

Includes all assessments by a registered nurse, including admission assessments, development of an individualized plan of care and evaluation for appropriateness of home care programs.

Level I - Basic

- Registered nurse coordination
 - Coordination of clinic appointments, hospital transfers and other professional services
 - Electronic health record
 - Medication set-up – including medication ordering and communication with physician, pharmacy and family
 - Medication administration up to three (3) times per day
 - Personal care, such as dressing, grooming and using the bathroom is provided through verbal cueing and direction, rather than hands-on assistance
 - Bathing is provided two (2) times a week through verbal cueing and direction, rather than hands-on assistance
 - Continence is managed with the use of continence products. Continence product is paid for by resident
 - Dining set-up and observation
-

Level II - Enhanced

- Registered nurse oversight
 - Coordination of clinic appointments, hospital transfers and other professional services
 - Electronic health record
 - Medication set-up – including medication ordering and communication with physician, pharmacy and family
 - Personal care such as dressing, grooming and using the bathroom is provided through verbal cueing and direction, as well as hands-on assistance
 - Medication administration four (4) or more times per day
 - Bathing is provided three (3) times a week through verbal cueing, as well as hands-on assistance
 - Incontinence is managed with the use of incontinence products and/or routine assistance using the bathroom. Incontinence product is paid for by resident
 - Dining set-up, food set-up and observation with verbal cueing
 - Simple staff intervention may be required to manage/redirect resident
-



MEMORY SUPPORT

Personal Care

Level III - Advancedh

- Ordering from pharmacy other than The Homestead's consulting pharmacy
- Registered nurse coordination
- Coordination of clinic appointments, hospital transfers and other professional services
- Electronic health record
- Medication set-up – including medication ordering and communication with physician, pharmacy and family
- Complex medication monitoring and administration, including, but not limited to: Coumadin, insulin management (not sliding scale), oxygen management, nebulizers, and wound care (supplies paid for by resident)
- Incontinence is managed with the use of continence products and scheduled assistance using the bathroom. Incontinence product is paid for by resident
- Personal care such as dressing, grooming and using the bathroom is provided through verbal cueing and direction, as well as hands-on assistance
- Bathing is provided three (3) times a week through verbal cueing as well as hands-on assistance
- Assistance with one-person transfers and walking
- Dining set-up, food set-up and observation with occasional, one-on-one assistance (Up to 7 hours/week)
- Regular staff intervention may be required to manage/redirect resident

Level IV - Specialty

Includes all of the care and services included in the Advanced Service Package plus one or more of the following services:

- Unstable medical condition requiring frequent nurse intervention of greater than two (2) changes to the plan of care in a week
- May be recovering from a hospital or nursing home stay
- Caregiver at all meals for modified diet monitoring
- Tube feeding
- Lymphedema wraps
- Complex monitoring and coordination of hospice care
- EZ stand assistance
- Two hour safety checks on a limited short term case by case basis
-

LTC Insurance Assistance

Assist with the coordination of required clinical documents for LTC insurance policies

MEMORY SUPPORT

Personal Care

Additional Services

- 3 Meals Daily
- Meal Delivery
- Guest/Individual Meal
- Guest Lodging
- Key FOB (additional)
- Key (additional)
- Storage Lock (replacement)
- Telephone (additional line installation)
- Telephone (additional line)
- Care Services Set-up
- Additional Laundry
- Shower Assistance
- Whirlpool Bath/Spa
- Telephone
- Storage
- Additional Housekeeping
- Maintenance (30-minute minimum)
- Apartment Transfer
- Telephone Transfer Fee (apt to apt)
- Key FOB (replacement)
- Key Replacement/Lock Change
- Nurse Visit
- LTC Insurance Assistance
- Medication (outside pharmacy or mail order)



For more information about The Homestead at Anoka or to schedule a tour, please call 763.528.6500 or visit homesteadatanoka.org.

The Homestead at Anoka— A Senior Living and Care Community

The Homestead at Anoka is a community filled with possibilities. Set amid the trails of the Rum River in historic Anoka, you'll find small town ease and sensibility, combined with the convenience and inspiration of a thriving, vibrant neighborhood.

At The Homestead, you can take comfort in knowing your needs can be met today and tomorrow, through an array of thoughtfully planned living choices and amenities.

Living and Care Choices

- Spacious, well-appointed independent living apartments
- Thoughtfully designed assisted living apartments
- Private, nurturing memory support residences
- State-of-the-art care center offering short-term rehabilitation; long-term care; cardiac care; and specialized memory support


Community Attractions

- Meditation chapel
- Rehabilitation clinic
- Fitness center
- Garden area
- Bistro
- General store
- Club lounge
- Walking trail
- Community room
- Complimentary Wi-Fi
- Restaurant-style dining
- Private dining room
- Beauty and barber salon
- Guest suite
- Outdoor courtyard

The Homestead at Anoka is a smoke-free community.

The Homestead at Anoka
3002 4th Avenue, Anoka, MN 55303

763.528.6500
homesteadatanoka.org

 Follow us on Facebook



The Homestead at Anoka is a part of Volunteers of America National Services (VOANS). VOANS is a wholly-owned subsidiary of Volunteers of America, Inc. - a national, nonprofit, faith-based organization. © 2022 Volunteers of America National Services. All Rights Reserved. We are designated tax-exempt under section 501(c)3 of the Internal Revenue Code.

THAA IL Broch o623

