

# Elder Homestead

A Senior Living and Care Community



## MEMORY CARE



**NATIONAL  
SERVICES**

## ELDER HOMESTEAD

### Memory Care

Making sure your loved one receives excellent care is your top priority. It's ours, too. Within Elder Homestead, our residents with memory loss move throughout their days enjoying the freedom to be active and social while experiencing structured, individualized care and supervision in a welcoming, appealing place to call home.

Elder Homestead features the perfect blend of residential Memory Care with life enrichment programs. Our supportive, specially-trained staff take pride in enriching the lives of our residents by celebrating individuality, supporting choice and encouraging independence whenever possible. Family and friends are always welcome to spend time with their loved one and join them for meals, special events and celebrations.

### Special Features

- Comfortable residences with managed access
- Thoughtfully designed bathrooms with walk-in shower and grab bars
- Kitchenette in each apartment
- Trained staff available 24 hours/day
- Licensed nursing
- Secured patio with access from the dining room

### Added Conveniences

(Included in monthly rate)

- Emergency response pendant (onsite staff response)
- Weekly light housekeeping services
- All utilities except telephone
- Basic cable service
- Complimentary Wi-Fi
- Planned life enrichment activities and programs based upon individual interests
- Use of all community spaces
- Scheduled transportation for outings
- Apartment and building maintenance
- Professional management by Elder Homestead
- Month-to-month residency agreement

### Rental Rates Summary

#### Security Deposit

## **ELDER HOMESTEAD**

### **Memory Care Philosophy Statement**

Our philosophy of service and care embodies the very essence of dignity, quality of life and respect for the individual. Elder Homestead's Memory Care program is designed specifically to caring for people with Alzheimer's disease or other memory impairments. A tranquil, self-contained environment has been created to encourage independence and support choice.

Planned service coordination enables residents to receive the personal care they may need, together with equally important social interaction.

### **Commitment to Care and Service**

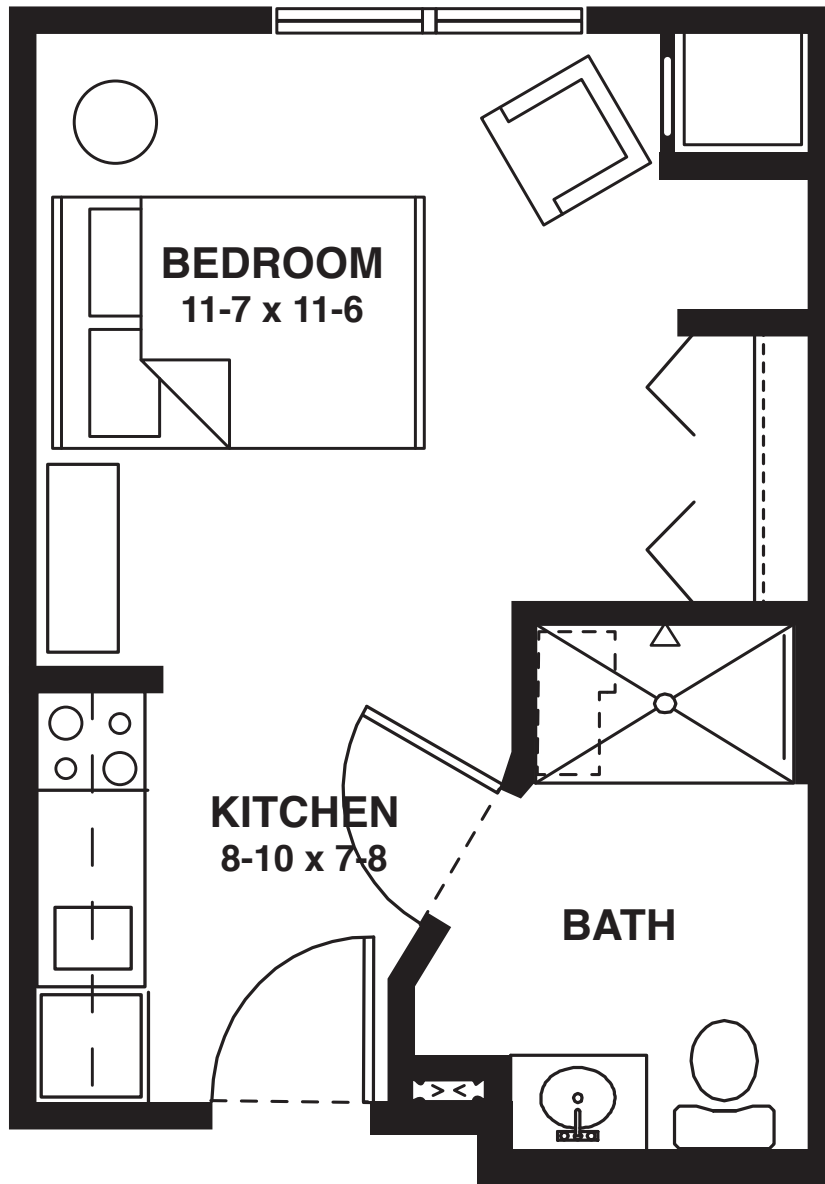
We continually strive to provide the best support and care services and to make our community one that enriches, encourages and fulfills our residents' daily lives.

Caring for individuals with cognitive loss requires special skills and training. At Elder Homestead, staff receives periodic up-to-date training to best serve our residents on a daily basis.

Family members are welcome anytime, and are included in making the transition to Elder Homestead seamless. There are ongoing opportunities for family and friends to stay involved in the resident's day-to-day living.

# APARTMENT

Floor Plans



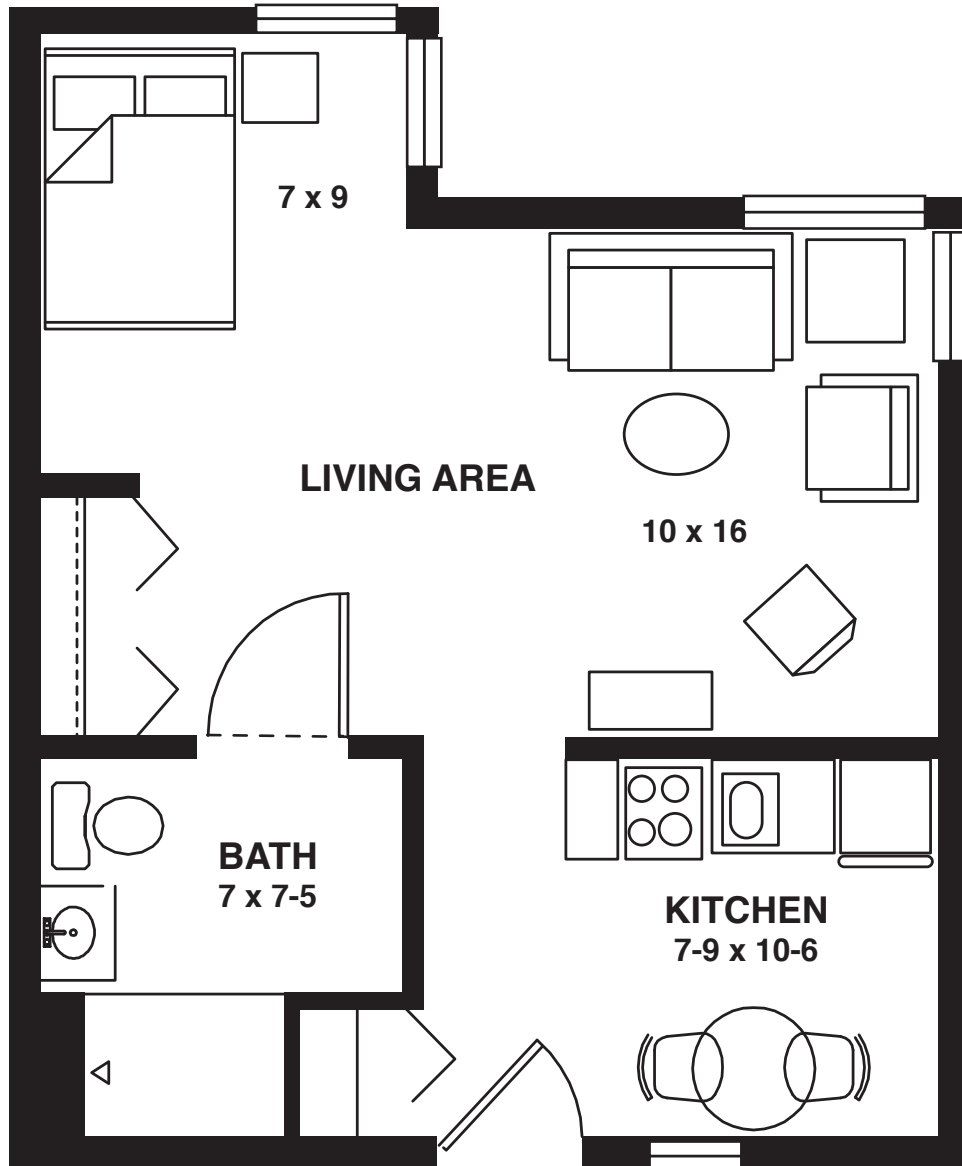
## Juniper

Studio  
315 sq. ft.

# APARTMENT

Floor Plans

Elm  
Studio  
409 sq. ft.



Please ask about availability. Features and amenities are subject to change.



## MEMORY CARE

### Personal Care

Personalized Memory Care begins with a health care assessment provided by a registered nurse, who collaborates with each resident's physician to develop individualized plans for health care and personal care services. An on-site registered nurse provides coordination for plans of care.

### Care Service Set-up

Includes all assessments by a registered nurse, including admission assessments, development of an individualized plan of care and evaluation for appropriateness of home care programs.

---

### Basic Service Package - Level I

Includes Registered Nurse oversight. Caregivers provide personal cares, medication monitoring and/or administration, laundry, and activity programming. Individual needs direction and/or verbal cueing to actual hands-on assist with personal care, for example: dressing and grooming. Individual does not present any persistent inappropriate behavior patterns such as: hitting, yelling or kicking, disruptive social interaction in group settings, for example; dining room, living room or enrichment program. He/she is independent with ambulation. Incontinence is managed independently with appropriate use of incontinence products and/or verbal direction by Caregivers.

---

### Enhanced Service Package - Level II

Includes all of the care and services included in the Basic Service Package - Level I plus the following: Caregivers provide personal cares, medication monitoring and/or administration, laundry, and activity programming. Individual needs verbal cues to hands-on assistance with personal care. Bowel and/or bladder incontinence is managed with appropriate use of incontinence products and/or scheduled toileting required up to (3) times in a 24-hour period by Caregivers. Transfers and ambulates with maximum assist of (1) Caregiver. Inappropriate behaviors can be managed with verbal redirection. Individual is willing and able to participate in activities of daily living.

---

### Advanced Service Package\* - Level III

Includes all of the care and services included in the Enhanced Service Package - Level II plus the following: Individuals requiring nursing service beyond administration of oral and topical medications, for example: accu checks as ordered by physician, dialing insulin pens filling of insulin syringes, Vitamin B12 injections, antibiotic injections, nebulizer treatments, wound care, unstable medical condition requiring frequent nurse intervention. Needs assistance with feeding. Bowel and bladder incontinence managed with appropriate use of incontinence product and/or scheduled toileting required up to (6) times in a 24-hour period. Inappropriate behaviors can be managed with verbal redirection and/or professional intervention, for example: nurse or medical.

---

## MEMORY CARE

### Personal Care

### Recuperating Service Package\* - Level IV

Includes all of the care and services included in the Advanced Service Package - Level III, but is specifically designed for residents who had a recent hospital or nursing home stay and require more comprehensive nursing support and supervision. This includes residents who have been placed on Hospice services.

\* Levels III & IV are reserved for current residents

---

### Additional Services

- 3-Meal Daily
- Meal Delivered
- Guest/Individual Meal
- Guest Lodging
- Key or FOB Additional/Replacement
- Care Services Set-up
- Additional Accu Checks
- Additional Housekeeping
- Phone
- Storage Locker/month
- Additional Service/Maintenance
- Foot Soak/Nail Care
- Pendant Replacement
- Transfer Apartment
- Nurse Visit
- Caregiver

*All services are private pay.*



For more information about Elder Homestead or to schedule a welcome tour, please call 952.283.2600 or visit [elderhomestead.org](http://elderhomestead.org).

## Elder Homestead— A Senior Living and Care Community

### Living and Care Choices

- Assisted Living
- Memory Care


### Community Attractions

- Lovely walking trails
- Screened-in wrap-around porches for utmost relaxation
- Inviting community rooms and recreation rooms
- Beauty and barber salon
- Restaurant-style dining
- Robust Life Enrichment program
- Spiritual care services on-site
- Complimentary Wi-Fi

*Elder Homestead is a smoke-free community.*

*Pets are welcome. Guidelines apply.*

Elder Homestead  
11400 4th Street North  
Minnetonka, MN 55343

952.283.2600  
[Elderhomestead.org](http://Elderhomestead.org)  
 Follow us on Facebook



Elder Homestead is a part of Volunteers of America National Services (VOANS). VOANS is a wholly-owned subsidiary of Volunteers of America, Inc. - a national, nonprofit, faith-based organization. © 2024 Volunteers of America National Services. All Rights Reserved. We are designated tax-exempt under section 501(c)3 of the Internal Revenue Code.

Elder Homestead MC BROCHURE 0124

