

**The Homestead at Rochester**  
A Senior Living and Care Community



**BELLEMOOR  
MEMORY SUPPORT**



**NATIONAL  
SERVICES**



## MEMORY SUPPORT

Making sure your loved one receives excellent care is our priority. At The Homestead at Rochester, residents with memory loss can enjoy the freedom to be active and social. Structured care and supervision is provided within a comfortable home-like community.

Our memory support caregivers and staff are expertly trained, compassionate and attentive—committed to learning each resident's personal preferences and meeting their daily needs. Our philosophy is simple: We care for you and those you love as we care for our own families.

### Special Features

- Residential setting with managed access
- Secure outdoor courtyard
- Specially trained staff
- Licensed nursing team
- Chef-led culinary program

### Added Conveniences

(Included in monthly rate)

- Weekly light housekeeping
- Linen service
- Personal laundry (two loads per week)
- Wi-Fi
- Personal pendant call system
- All utilities, including telephone, expanded cable television, heat, electric, central air conditioning, water and trash
- Planned life enrichment activities based upon individual interests
- Priority access to other Homestead at Rochester living and care options based on availability
- Professional management by Volunteers of America
- Month-to-month lease
- 3 meals daily plus snacks

### Extra Services

(Available for additional fee)

- Specialized nursing and rehabilitation therapy visits
- Additional housekeeping, laundry and linen services
- Scheduled transportation
- Guest meals
- Guest suite
- Beauty and barber services
- Storage

## PERSONAL CARE

Personalized memory support at Bellemoor begins with a health assessment provided by a registered nurse, who collaborates with the resident's physician to develop individualized plans for health care and personal services. Care coordination by a registered nurse is included with each level of personal care.

### Personal Care Assessment

One-time fee

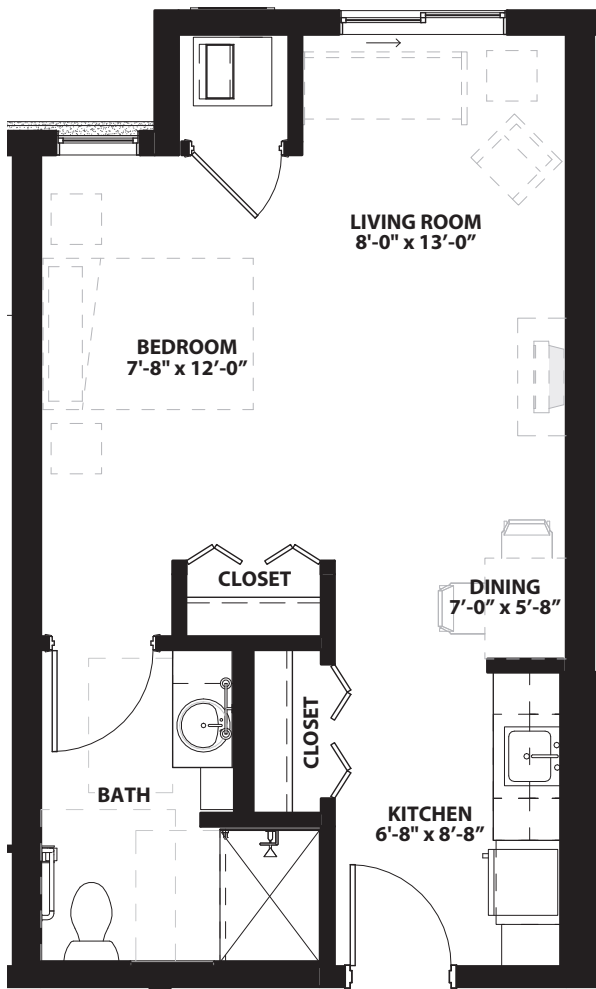
- Initial health assessment by registered nurse

### Personal Care Plan

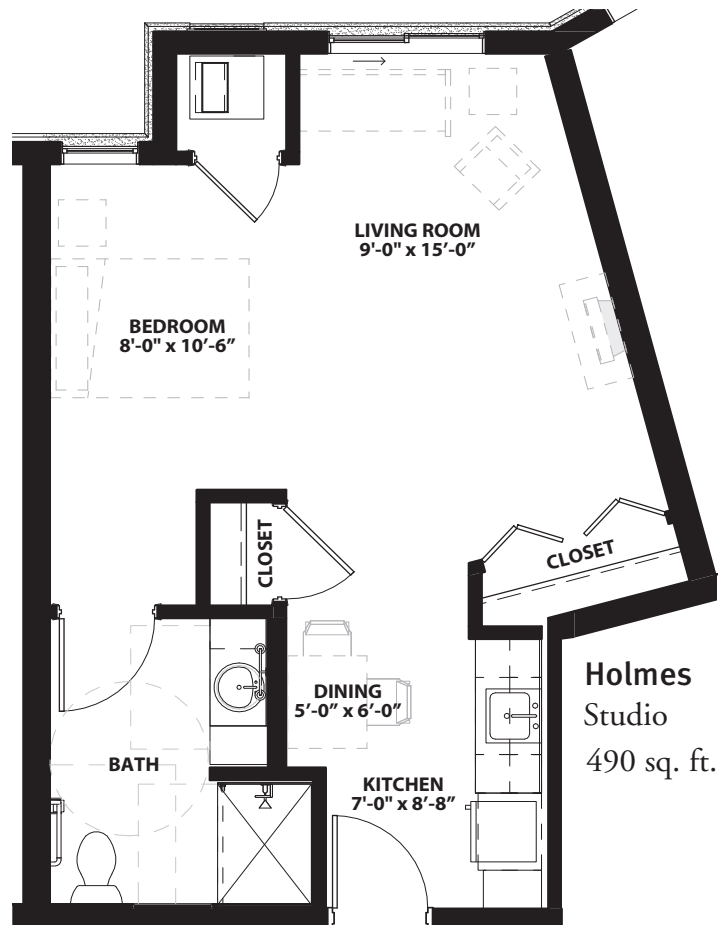
Each level of personal care includes an array of services designed to meet the changing needs of the resident. Care is coordinated by a registered nurse and delivered by licensed nurses and caregivers.

- Licensed nurse on site at least 40 hours/week, and on-call support
- Liaison with health care professionals
- Coordination of laboratory requests, clinic appointments and hospital transfers
- Maintain electronic health record
- Response to pendant calls 24 hours/day by on-site caregiver
- Blood pressure and weight checks each month
- Personal care reassessment by licensed nurse every 90 days or on an as-needed basis.

## BELLEMOOR Floor Plans



**Greenway**  
Studio  
450 sq. ft.



**Holmes**  
Studio  
490 sq. ft.



For more information about The Homestead at Rochester or to schedule a tour, please call (507) 810-0447 or visit [thehomesteadatrochester.org](http://thehomesteadatrochester.org).

## The Homestead at Rochester— A Senior Living and Care Community

Our thriving community offers a compassionate environment to meet the ongoing needs for yourself or a family member—all conveniently located within a safe, beautiful campus minutes from shopping, restaurants, clinics and churches.

We are nestled into a serene suburban area with easy access off 18th Ave. NW & 55th St. NW.

At The Homestead at Rochester, you can take comfort in knowing your needs can be met today, and tomorrow, through a convenient on-site network of thoughtfully planned living choices and amenities.

## The Homestead at Rochester Community Attractions

- Bistro
- Market
- Fitness center
- Rehabilitation center
- Library, computer and fax
- Complimentary Wi-Fi
- Restaurant-style dining
- Beauty and barber shop
- Clubroom
- Card and billiard parlor
- Guest suite
- Chapel and community room
- Workshop
- Garden plots
- Walking trail

*The Homestead at Rochester is  
a smoke-free community*



The Homestead at Rochester  
A Senior Living and Care Community  
5520 Ballington Road NW  
Rochester, MN 55901  
507.322.5870  
[thehomesteadatrochester.org](http://thehomesteadatrochester.org)  
f Follow us on Facebook

The Homestead at Rochester is a part of the Volunteers of America National Services (VOANS) family of organizations. VOANS, a wholly-owned subsidiary of Volunteers of America Inc., provides affordable housing and healthcare services in over 40 states and Puerto Rico. As a national, nonprofit, faith-based organization, VOANS is dedicated to helping those in need live healthy, safe and productive lives.

THAR BRIDGEMOOR IL BROCHURE 0325

