



NOW LEASING!

ASSISTED LIVING

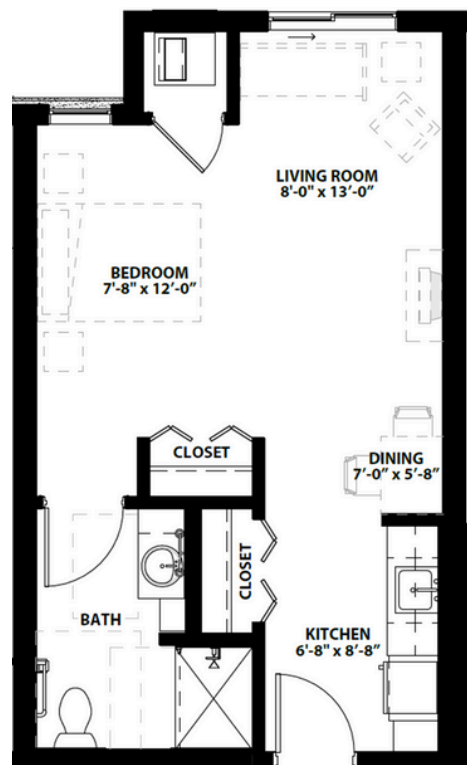
Studios

- Dedicated 24-hour onsite care staff
- Kitchenette with refrigerator, microwave and sink
- Spacious private bathroom
- Access to three meals daily
- Complimentary transportation to any medical, dental or banking appointments
- Daily activities and social programs
- **Available for leasing!**

Call for a tour today
507.810.0447

1900 Ballington Blvd N
Rochester, MN 55901
www.homesteadatrochester.org

Monthly Rent
\$3,095 - \$3,145



**The Homestead
at Rochester**

 **Volunteers
of America** | NATIONAL
SERVICES